

Quick Reference Guide

AirGoggle™ Network Video Camera



AirGoggle NVC100

AirGoggle NVC110

AirGoggle NVC110P

AirGoggleNVC110W

InscapeData

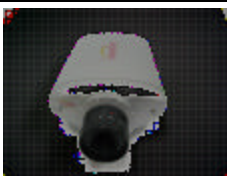
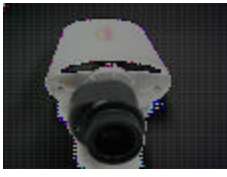


1. Overview

1.1 Box Content

Please check to make sure the following items are in the box.

Content	Description	Remark
Product main body	IP camera	NVC100 : Fixed Iris Lens NVC110 : Auto Iris Lens
Power adapter	Input: 100~250V 50-60Hz Output: +12V, 2.0A	NVC110P comes with Power over Ethernet (PoE) Injector module
AC Power Cable	AC 250V, 10A~16A	
LAN Cable	2m long (Cross-over Type)	For direct connection between the NVC and installation PC only. For all other Lan/Wan applications, use the appropriate cable.
CD	Software & User's Guide	Install wizard supported
Quick Reference Guide	Quick installation guide	
Warranty Information	Product warranty sheet	May be included in Quick Reference Guide
Camera Mounting Kit	Camera mount to secure into walls and ceilings	

1.2. Preview

Product	IP-Installer	Viewer Program(NVR100)
 NVC100  NVC110		
Network camera	A PC program that helps install IP address onto the product	PC software to view and record the A/V streaming data transmitted from products

1.3. Physical description

1.3.1. Front Panel



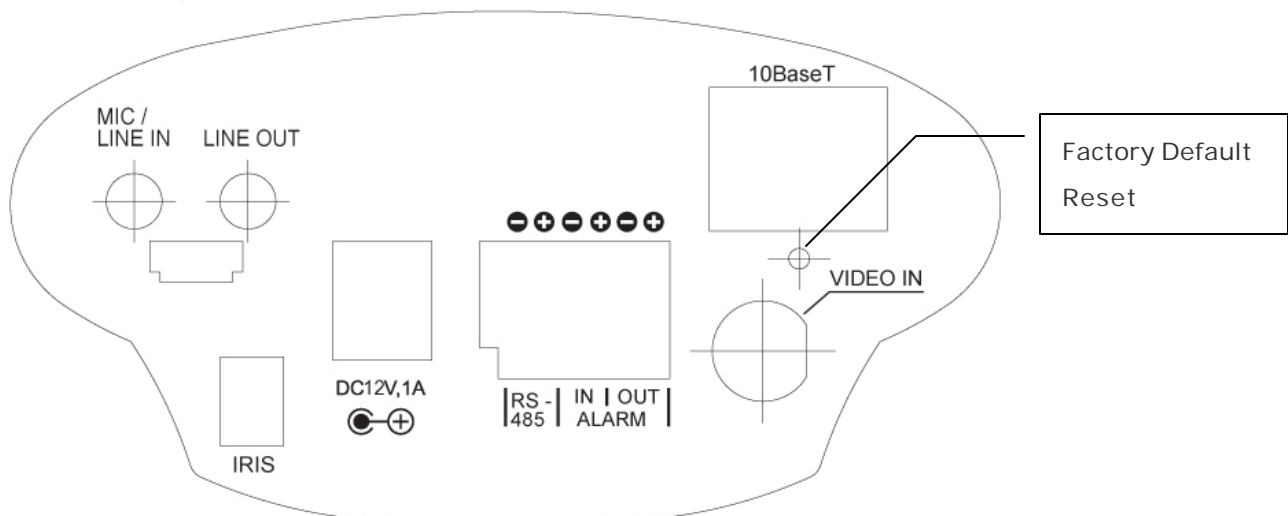
NVC100



NVC110

- **POWER:** Status indicator shows the status of the NVC in three different colors.
 - ① Green: The green light indicates that the NVC is operating properly. If the green light is continuously on, it means that the NVC is ready to transmit data via network. If the green light blinks, it means that there is traffic between LAN and NVC.
 - ② Red: The red light indicates that the hardware of the NVC is not operating properly.
 - ③ Orange: The orange light indicates that the software of the NVC is not operating properly.
- **Microphone:** Picks up sound from the environment for transmission over the network.

1.3.2. Rear panel



NVC100/110

- **MIC/LINE IN:** Interfaces to external audio device / microphone
- **LINE OUT:** Interface to connect external speaker with amplifier
- **10BaseT:** 10Mbps Ethernet interface for NVC
- **IRIS:** Interface only for NVC110x that connects with DC -iris lens cable. (Not for fixed lens)
- **DC12V:** DC 12V power supply to the unit (May not use this for NVC110P model, power can be delivered through Ethernet port by PoE module.)
- **ALARM IN/OUT & RS-485 Connector:** Interfaces for alarm inputs and outputs, and PTZ devices
- **VIDEO -IN:** Interface for analog CCTV camera or other analog videosignals (TV, DVR, etc.)
- **Factory Default Reset:** Reset to factory default configuration (Press and hold 3 seconds.)

2. Installation and IP allocation

The setup in this guide utilizes cross-over cable connection between the NVC units and installation computer as shown in figure 2-1 for easy installation and demonstration of basic feature sets. The NVC supports network configurations including LAN, ADSL modem, and cable modem including IP sharing devices. Use normal Ethernet cables in most cases unless connecting directly between installation pc and NVC.



For further information on LAN, xDSL, and cable modem connection, please refer to the user manual in the CD provided with the product.

2.1. Quick Installation Order

In order to check the functionality of the product, please follow the 3 steps below:

- ? Connect the installation computer and the NVC product via a cross over Ethernet cable.
- ? Install the IP-Installer program on the installation computer.
- ? Assign an IP address to the NVC product with the IP-Installer.

2.2. Connecting PC and the Product

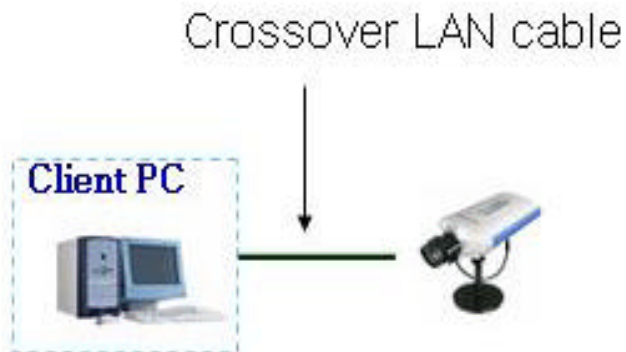


Figure 2-1 Connecting NVC and PC by cross type LAN Cable

- ? Apply power to the installation PC and start Windows Operating System.
- ? Apply power to the NVC product and connect it to the installation PC with the cross-over LAN cable as shown in Figure 2-1.
- ? Video input for each product
 - Network Camera: When using auto iris lens, DC-Iris lens cable should be connected to iris interface at rear panel. (NVC110 model only)




In case there are many units to install and test, please use a hub to connect the PC and the products. (Use direct LAN cables when connected to hub)

2.3. Installing and Running IP-Installer Program

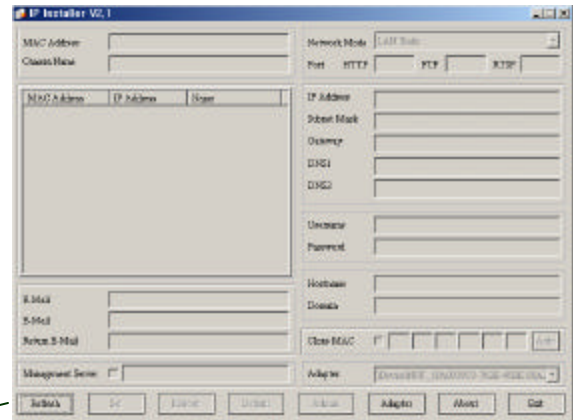
2.3.1 Installing IP-Installer Program

Insert the product CD provided into the CD-ROM drive of the installation PC and select "2.IP-installer Software \IPInstaller_V2_1_3_English\install.bat"; the IP-Installer program will be automatically installed.

2.3.2 Running IP-Installer Program

? Double-click the IP-Installer icon () to start the IP -Installer.

If using Window98SE, press "Refresh" button after starting the IP Installer. The attached camera or server will appear in the left window of the IP-Installer program. As shown in figure 2 -2.



Refresh Button

Fig 2-2 Initial mode of IP -Installer

? Network Adapter Selection on Window 2000 or XP

If using Windows 2000 or XP, the PC will ask you to select proper network adaptor as in Figure 2-3. It is important to select the right packet driver for the network adaptor. If the PC is configured to support more than one network (e.g., various MODEM, IEEE1394, etc), the PC can crash if one selects the wrong packet driver. Click on a network adaptor to highlight then press OK. Figure 2 -3 shows an Intel "PRO/100 VE" Ethernet adaptor.

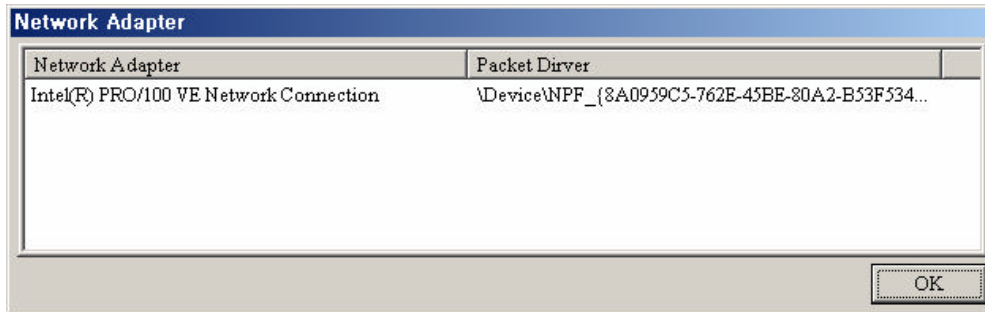
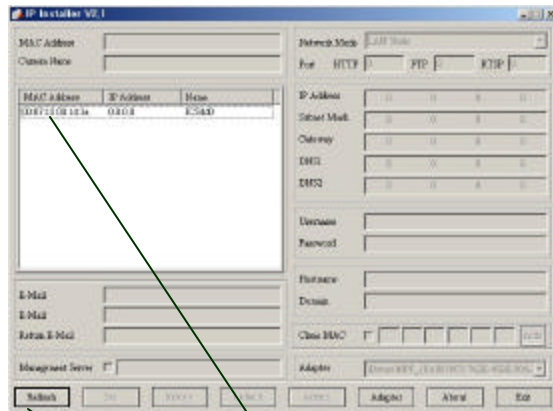


Fig 2-3. Network Adapter Screen Mode

? Click "Refresh " as in Fig 2-4 and check whether the MAC address that appears on the screen matches the one at the bottom of the physical unit. In cases which they do not match, please contact your authorized sales agent.



Refresh button MAC Address

Fig 2-4 IP Installer's Initial Mode

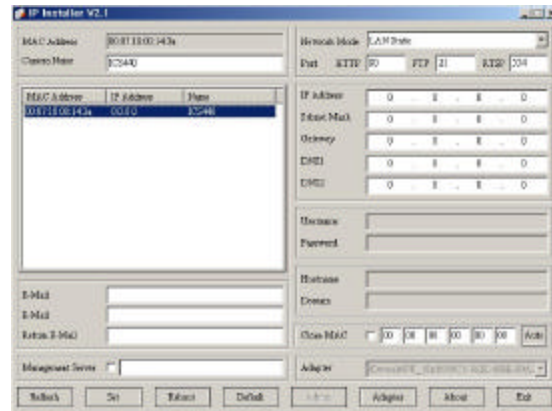


Fig 2-5 Mode after double-click of MAC Address

? Double-click the MAC address on IP-Installer. Default network setup parameters are displayed on the right side of the screen as shown in Fig 2-5.

2.4 Setting IP Address

According to the combinations of network type and IP allocation methods, "Network Mode" can be "LAN Automatic", "ADSL Static", "ADSL Automatic", "Cable Modem Static", "Cable Modem Automatic", which you can choose from. Setting can vary depending on this "Network Mode". This "Quick Installation Guide" will explain only about "LAN Static" mode in which the PC and the product is directly connected by cross type LAN cable.



Please refer to the user manuals in the CD in the box for detail information on network modes besides "LAN Static".

LAN Static

Fixed IP is required in “LAN Static” mode. Select “LAN Static” and insert “IP address” and “subnet mask” as shown in Fig 2 -6 .

Subnet values of both the install PC and the product must be consistent and only the last portion of IP addresses of them should be different. (E.g. PC: 211.52.88.210, Product: 211.52. 88.200)

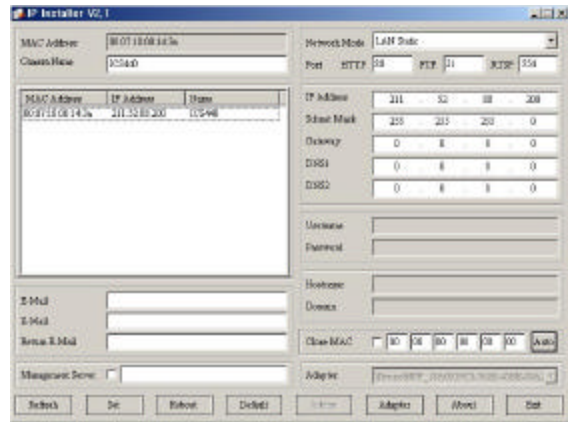


Fig 2 -6 Network Setting for LAN Static

2.4.1 . Completing IP Address Setting

After setting up all the parameters, click on the “Set” button. You will see the following message:

“All values will be saved, and your server will be restarted. Continue?”

Click “Yes” button to save all the values. The unit will be rebooted.

3. Accessing to the Product and Checking Basic Function(Viewing)

When IP setting is done with IP-Installer, you must check whether the video stream is transmitted from the unit. There are two ways to check the video transmission from the unit.


- ? Using NVR100, the stand-alone software for multi-channel viewing and recording
- ? Using the conventional web browser (Internet Explorer)

3.1 Accessing by NVR100 Program

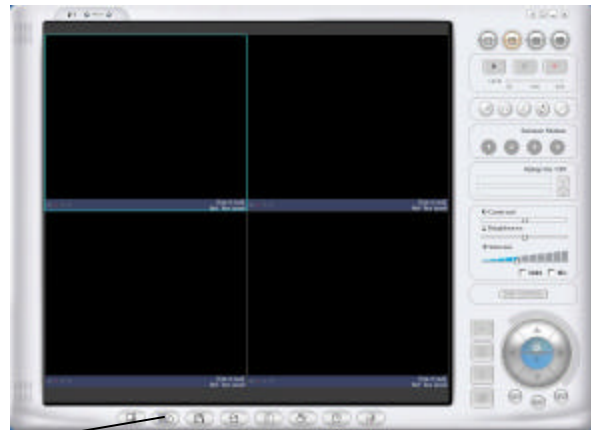
3.1.1 Installing NVR100 and Running it

Insert the installation CD provided with the unit into the CD-ROM drive of the PC and select “NVR100.exe” from the “NVR100 Software” directory, the NVR100 program will run automatically.



3.1.2 Running NVR100 Program

? Start the software by double-click the icon, , on your windows desktop. The NVR100 software is shown in Fig 3-1.

? The NVR100 is designed to display 16 channels simultaneously. The user can customize the display mode accordingly to fit their needs. (Refer to NVR100 user's Guide for more detail.)



Camera assignment Button **Fig 3-1 NVR100 Initial Mode**

? Click "Camera Assignment" button at the bottom, second to the left. The IP setting mode screen will appear as shown in Fig 3-2. "Camera Assignment" can be selected also by clicking the right button of the mouse. As in Fig 3-2, insert IP address, channel, user IP (default: root), password (default: dw2001) and click , then the values set will be saved. (Please make sure that "Store Pwd" is checked before clicking . Otherwise, the values will not be saved.)

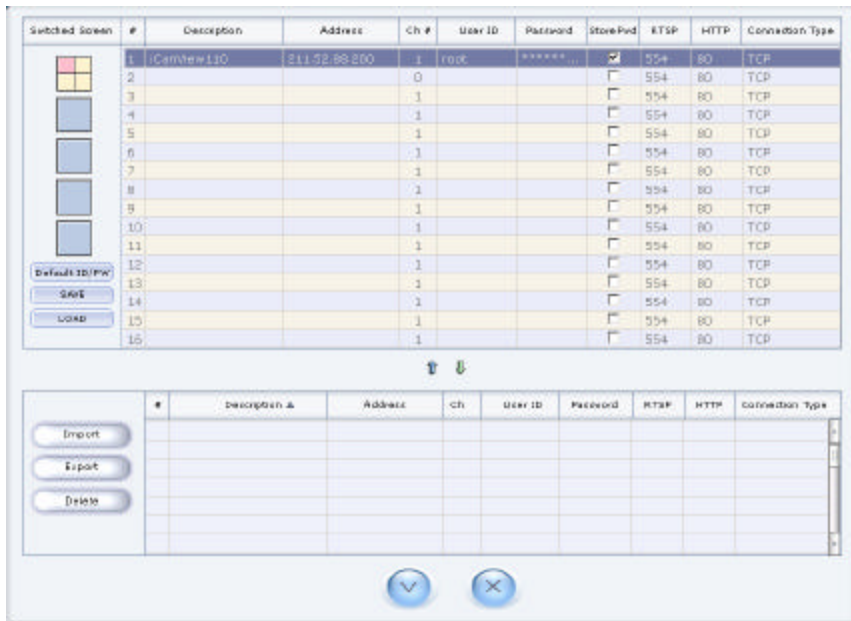



Fig 3-2 NVR100 IP Address Setting Mode

? Click the start button, , and the live video connected to the unit will be transmitted and appear on your pc screen as shown in Fig 3-3.

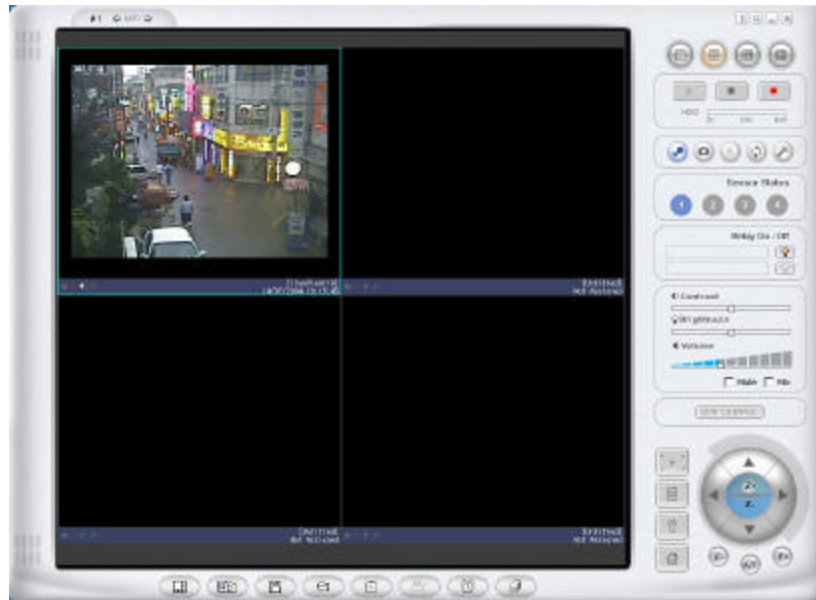


Fig 3-3 Showing Live Images via NVR100



Please refer to the NVR 100 user manual for more information.

3.2 Accessing by Browser

The NVC is designed to be accessed via your favorite web browser in addition to the NVR100 software. In order to access the unit, you must type in the appropriate IP address in the browser.

Fig 3-4 is an example of the web interface.

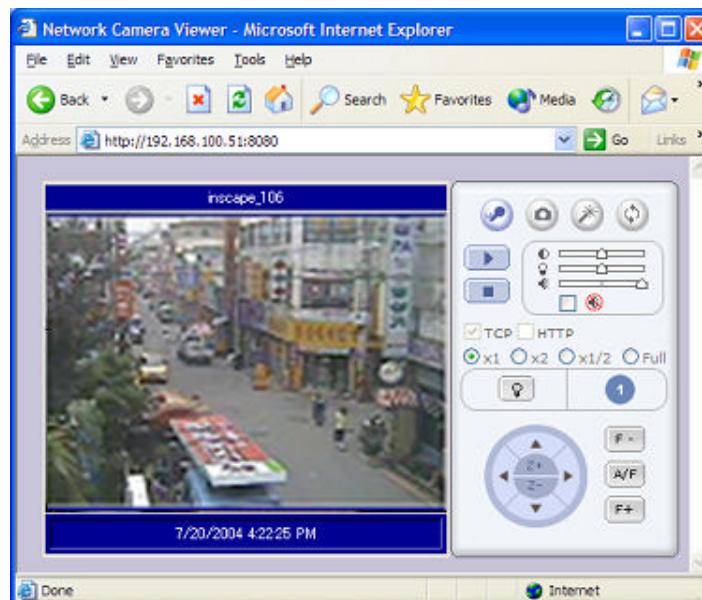


Fig 3-4 Viewing the Live Video via Web Viewer