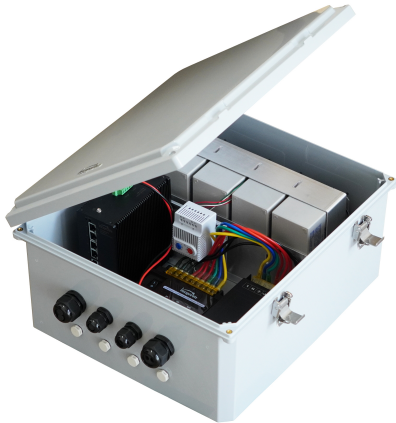


LinkPower™ Outdoor UPS PoE Switch Systems



Outdoor UPS PoE Switch Systems

The LinkPower Outdoor UPS PoE Switch Systems, an integrated UPS 48V Battery Backup Power and Industrial PoE Switch, and it offers a robust solution for uninterrupted power while simultaneously powering one of our Linkpower Industrial PoE switches. This comprehensive system includes two cooling fans and a Thermostat, bolstering its resilience and efficiency.

Customize your network infrastructure by choosing from a variety of Industrial PoE switches with different port configurations (6, 10, 12, 14, or 16 ports), offering options for 4 or 8 PoE ports, and a mix of Gigabit RJ45 or Gigabit SFP uplink ports. These switches support various PoE standards (IEEE802.3af/at or IEEE802.3bt), ensuring versatility and compatibility with a wide range of devices.

The UPS feature offers AC to battery backup with a stable 48V DC output of up to 260W. Encased in a durable IP68 housing, it guarantees durability even in harsh weather conditions. With a wide input voltage range (100 to 240V AC) and operating temperatures from -20°C to 60°C, the Outdoor UPS PoE Switch Systems ensure consistent performance and system reliability in inclement outdoor environments.

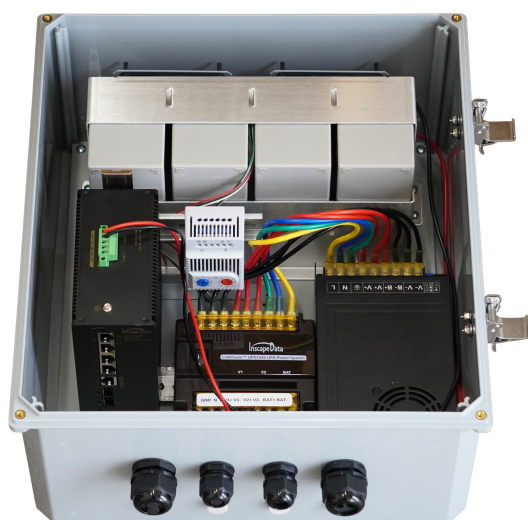
SYSTEM HIGHLIGHTS

- Rectifier Output - high efficiency up to 90%
- Protection: Input fuse / overload /over voltage / Short Circuit
- Rectifier with air fan cooling
- No delay battery boot up
- 4 12V Sealed AGM Batteries
 - Extended life over flooded lead acid
 - Faster charging over flooded lead acid
 - No off-gassing
- High impact polycarbonate hinged enclosure with locking latch, UL Type 4X, IP66 with locking latches and IP168 with screws
- Wall and pole mount installation
- Custom-design inside frame for better space management and potential water immersion prevention
- Internal cable storage and management for easy access and safety
- Ventilation with thermostat controlled fan for the enclosure to reduce heat and the internal moisture
- Full weather outdoor protection, high Impact polycarbonate hinged enclosure with IP68 weatherproof rating
- 3-Year limited warranty on electronics, parts and labor; manufacturer's warranty on batteries

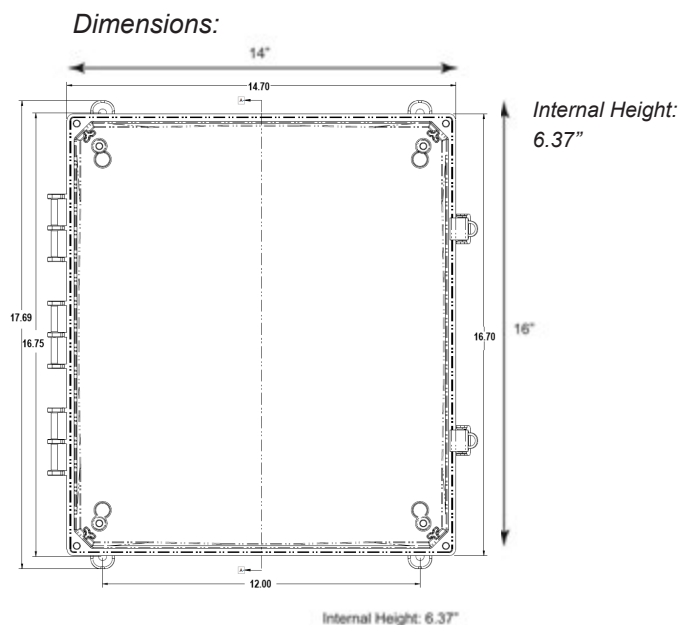
UPS1048 Technical Specifications

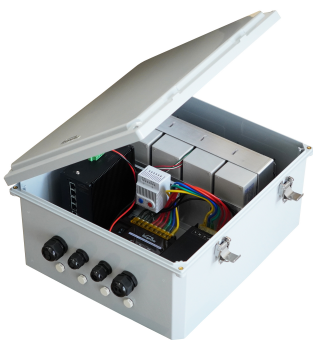
INPUT	Voltage Range	100 - 240VAC	
	Frequency Range	50 - 60Hz	
	Input Current	6.0 A MAX	
OUTPUT	Voltage (AC Mode)	52V	
	Voltage (Battery Mode)	Same as battery voltage	
	Rated Current	5.0A	
	Rated Power (Max.)	260W	
	Efficiency (Typ.)	90%	
	Ripple & Noise	1% mVpp	
	Output Channel	2 channels	
CHARGING	Voltage	54V \pm 2%	
	Current	0.2A (max.) Constant voltage mode, charge current decreases when battery voltage increases.	
PROTECTION	Overload	6A \pm 5% Hiccup mode, recovers automatically after fault condition is removed.	
	Over Voltage	60V \pm 5% Hiccup mode, recovers automatically after fault condition is removed.	
	Short Circuit	Hiccup mode, recovers automatically after fault condition is removed.	
	Battery Low Voltage	46V \pm 2% PSU shuts down until AC power recovers.	
	Battery Reverse Connect	Battery not works, no effect on main output.	
ENVIRONMENT	Temperature	Working: -25 – 60°C	Storage: -40 - 80°C
	Humidity	Working: 20 - 90%RH	Storage: 10 - 95%RH
LED INDICATOR	Red	On	AC power is on
	Green	On	DC output is on
	Yellow	On	Battery is discharging / fully charged
		Flickering	Battery is charging
	Red	On	AC failure alarm
	Red	On	Battery low voltage (<44V) alarm
SAFETY & EMC	EMC Standards	EN 55022: 2010, EN 55024: 2010, EN 61000-3-2: 2014, EN 61000-3-3: 2013	
	LVD Standards	EN 60950-1: 2006 + A11: 2009 + A1: 2010 + A12: 2011 + A2: 2013	
Enclosure	Dimensions: 16x14x7 Inch, Weight: 33 LB High Impact polycarbonate hinged enclosure with clear cover with locking latch. UL Listed		
Warranty	Three year limited warranty on electronics, parts and labor; manufacturer's warranty on batteries		

INTERNAL VIEW



UPS1048-400-06

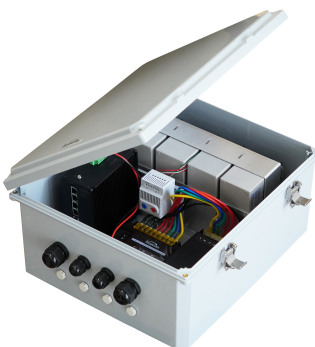




UPS1048-400-06

UPS1048 + LPS3400ATM

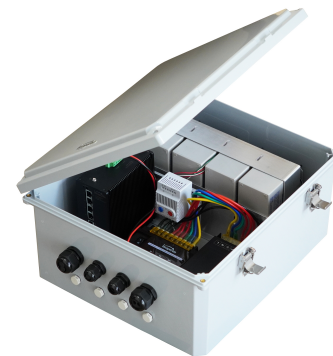
Industrial L2+ Managed Gigabit PoE Network Switch / 6 Ports with 2 Gb Fiber Uplink Ports



UPS 1048-400-06P

UPS1048+ LPS3400ATMP

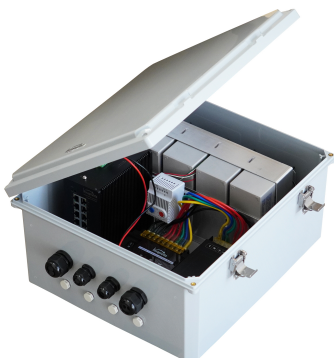
Industrial L2+ Managed Gigabit 802.3bt PoE Network Switch / 6 Ports with 2 Gb Fiber Uplink Ports



UPS1048-800-14

UPS1048 + LPS3800ATM

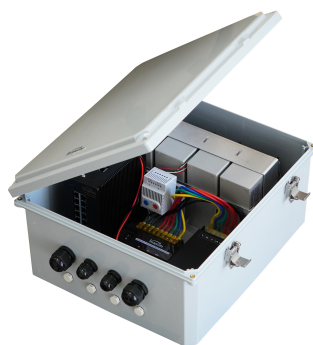
Industrial L2+ Managed Gigabit PoE Network Switch / 14 Ports with 4 Gb Fiber & 2 Gb RJ45 Uplink Ports



UPS1048-802-10

UPS1048 + LPS3802ATM

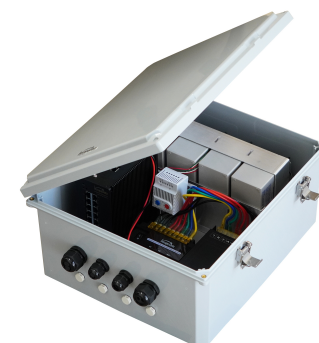
Industrial L2+ Managed Gigabit PoE Network Switch / 10 Ports with 2 Gb Fiber Uplink Ports



UPS1048-684-16-2+

UPS1048 + LPS6844ATM

Industrial L2+ Managed Gigabit PoE Network Switch / 16 Ports with 4 10Gb Fiber & 4 Gb RJ45 Uplink Ports



UPS1048-784-16-3

UPS1048 + LPS7844ATM

Industrial L3 Managed Gigabit PoE Network Switch / 16 Ports with 4 10Gb Fiber & 4 Gb RJ45 Uplink Ports



UPS1048-868-12P

UPS1048 + LPS10868ATMP

Industrial L2+ Managed 2.5 Gb 802.3bt PoE Network Switch / 12 Ports with 4 10Gb Fiber Uplink Ports



CFK0001

Thermostat & Cooling Fan Kit



Product Information Online: <http://www.inscapedata.com>

Corporate Headquarters
 2012 Hartog Dr, San Jose, CA, 95131, U.S.A.
 PHONE +1.408.392.9800 FAX +1.408.392.9812 E
 MAIL sales@inscapedata.com

Revision 1.0