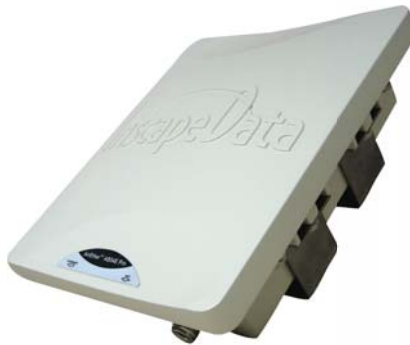


# AirEther™ AB54E Pro Multimode Wireless Base Station



Inscape Data's AirEther™ AB54E Pro Multimode Wireless Base Station products are designed for outdoor long-range wireless communications, based on IEEE802.11 b/g standards using 2.4GHz frequency. The AB54E Pro is designed for carrier class wireless applications, i.e. municipal hot spots. These reliable outdoor wireless products are capable of operating at one of the four modes: Access Point, Wireless Bridge, Repeater, or Client Bridge. AB54E Pro is manufactured with an IP68 weather-proof housing. Our AirEther base stations are designed for near line-of-sight wireless applications. The radio performance of these wireless products is designed and optimized for long-range and high throughput wireless communications based on the IEEE 802.11 b/g standards.

Our AirEther AB54E Pro products are designed with the Power over Ethernet (PoE) feature, which allows power and data transmitted over a single network cable. This capability provides for simple, convenient installation. When you use the LPS1000 Outdoor PoE Switch and networking with any of the NVC Series Cameras, all the wireless devices and the cameras are networked within a single outdoor LAN (Local Area Network). It becomes much easier to manage, integrate, install, maintain, and troubleshoot. Based on Inscape Data's patent-protected technology, our new Outdoor PoE Switch greatly lessens challenges for outdoor LAN design, integration, and deployment.

## KEY FEATURES & BENEFITS

- IP configuration software designed with user friendly GUI for easy configuration of the wireless system, such as factory default setting, IP address setting, and wireless setting
- Allow either vertical or horizontal antenna polarity alignment
- The AirEther AB54E Pro offers 28 dBm transmit power when operating under the 802.11b mode, and offers 22 dBm transmit power when operating under the 802.11g mode (FCC only)
- The AirEther AB54E and AB54E Pro offer an external N-Female antenna for using with more flexible antennas, such as high gain omni directional or a more narrow beamwidth sector antenna
- Supports WPA and WPA-PSK with AES and TKIP, 152-bit encryption for the highest data security
- Easy to install with cost effective Power over Ethernet (PoE)
- Swivel mounting accessories provide an out-of-the-box solution for quick and easy installation
- Compliant to the IEEE 802.11 b/g standards, DSSS for 802.11b mode radio operations and OFDM technology for 802.11g mode radio operations, and support Super G mode for up to 108 Mbps of data rate
- The AirEther AB54 is designed with a built in 12 dBi directional panel antenna and AB54E/Pro with type N female antenna connector
- Built in site survey and management tools for simplified installations and operations of wireless system
- Low profile enclosure designed for minimum wind resistance
- Transmit power control for optimal long range radio performance
- IP67 certified all weather housing for outdoor environments; protected by a heavy-duty UV stable glass filled Polycarbonate plastic housing
- Fully weatherized outdoor unit operates in temperatures ranging from -22°F to +180°F (-30°C to +70°C)

## APPLICATIONS



### AIRPORTS

Regardless if it is inside or outside of an airport, Inscape Data offers total wired or wireless IP based video security solutions that will save on your installation cost and make your monitoring more efficient



### METROPOLITAN STREETS

Inscape Data's wired and wireless IP based video security solutions will save on your installation cost and make the streets and metropolitan safer



### BUILDINGS

Inscape Data's wired and wireless IP based video security solutions will save on your installation cost and make your buildings more secure



### SCHOOL CAMPUS

Regardless if it is inside classrooms or on a campus, Inscape Data's wired and wireless IP based video security solutions will save on your installation cost and make monitoring easier

## SYSTEM CONFIGURATIONS



Hardware Revision
R3
Standards Compliance
IEEE 802.11b/g
IEEE 802.3, IEEE 802.3u
Modulation
IEEE802.11b: CCK,DQPSK,DBPSK
IEEE802.11g: OFDM
Frequency Band
America/FCC : 2.412~2.462 GHz (11 channels)
Europe CE/ETSI : 2.412~2.472 GHz (13 channels)
Japan : 2.412~2.484 GHz (14 channels)
Transmission Power (FCC)
28 dBm max
Transmission Rate
IEEE802.11b: 1/2/5.5/11Mbps
IEEE802.11g: 6/9/12/18/24/36/48/54Mbps
Super g: up to 108 Mbps
Access Point Interfaces
Auto MDI/MDI-X Ethernet 10/100Base-TX: RJ-45
Receiver Sensitivity
802.11b -85dBm@ 11Mbps, -88 dBm@ 5.5 Mbps, -90 dBm@ 2 Mbps, -94 dBm@ 1 Mbps
802.11g -91dBm@ 6Mbps, -88 dBm@ 12 Mbps,-82 dBm @36Mbps, -76 dBm@ 54 Mbps, -70 dBm@ 108Mbps
Antenna Connector
N-Female
Security Systems
64-bit/128-bit/152-bit WEP encryption; Wi-Fi Protected Access WPA with AES or TKIP, WPA-PSK
WPA2
Wireless Setting
Access Point, Wireless Bridge, Repeater, Client Bridge
Multiple BSSID with 802.1g VLAN Tagging
Software/Firmware
Site Survey
Wireless Client List
DHCP Client
Wireless access control by MAC address (deny or accept)
WPA Support (WPA personal and enterprise)
Web-based configuration via popular browser (IE,Netscape)
Firmware upgrade and configuration backup via Web
Reset to default by WebUI or software
SNMP
Spanning Tree Protocol
VPN pass-through (PPTP, L2TP, IPSEC)
QOS
Network Time
Syslog Server
Environment Temperature
-22°F to +158°F (-30°C to +70°C)
Power
48VDC 400mA (48VDC 1A AC/DC adapter included)
Network Management
System OS Support Windows 95/98/Me/NT4.0/2000/XP
Warranty
One year limited

- a. 9.6" (244mm)
- b. 7.9" (201mm)
- c. 3.25" (83mm)



ANTENNA OPTIONS



OA09  
2.4GHz Omni Antenna



SA1821  
2.4GHz Sector Antenna



PA21  
2.4GHz Panel Antenna

ACCESSORIES



AC100  
1M Low Loss  
Antenna Cable  
N-Male to N-Male



WC001  
Waterproof  
Connector Set



WC25, WC75, WC100  
25Ft, 75Ft, and 100Ft CAT5  
Outdoor Grade Ethernet Cables

PACKAGE CONTENTS

1. AB54E Pro Unit
2. Ethernet Inline Power Injector (PoE)
3. AC-DC, Adapter with Wall-Plug Power Cord
4. Product CDROM
5. Mass Mounting (U Bolt) Kit and Wall Mount
6. Waterproof Connector
7. Warranty Information Sheet



THE LEADING  
OUTDOOR NETWORK  
APPLIANCE COMPANY

Product Information Online: <http://www.inscapedata.com/ab54.htm>

Corporate Headquarters  
1620 Oakland Road, Suite D101, San Jose, CA 95131, U.S.A.  
PHONE +1.408.392.9800 FAX +1.408.392.9812  
EMAIL [sales@inscapedata.com](mailto:sales@inscapedata.com)

Total Turnkey Solutions for Outdoor PoE, Wired/Wireless, and IP Video Applications