



AirEther Product Software Upgrade Procedure

Introduction

The AirEther AP11, RB11, and CB11 outdoor 802.11b products are software upgradeable. Newer version of the software may include new features and enhancements. The software release notes will include details unique to each software release.

NOTE: *If your unit has been functioning as you expected, there is no need to upgrade the software. Upgrading the software on your unit poses a risk and may result in equipment damage if done improperly. Inscape Data will not warrant products damaged by improper use or neglect through software upgrades.*

Requirements

1. Any TFTP server software. You may download [3C Daemon version 2.0 revision 10](#), freeware from 3 COM.
2. PC running TFTP server software on the same network as the AirEther Product.
3. A copy of the new software release. It contains two files (*.bin and *.img). New software release may be obtained through Inscape Data's web site or the engineering department.

Procedure

1. Obtain the AirEther software and place the 2 files in a convenient file folder on your PC and note the two file names.
2. Run the TFTP server application of your choice. Configure and setup the TFTP server software:
 - a. Point the file location to the directory where you place the new software from step 1.
 - b. Configure the network settings to reflect the same network and subnet as the AirEther equipment.
 - c. Note the IP address of the PC running the TFTP Server.
3. From the web management console of the AirEther equipment, click **Utility**, select **Software Upgrade** page, see Figure 1. In here, you must specify the **TFTP server IP** and select (**Program image and Web image**), then click **OK** button to start the TFTP upgrade process. If the upgrade process is a success, the RB11 will apply the new settings and start rebooting automatically.

4. After system reboot, the IP address of the AirEther Unit will reset to the factory default setting of 192.168.2.1. Redirect the URL accordingly.
5. Verify in Utility > System Info the software version number to reflect the new software upgrade.

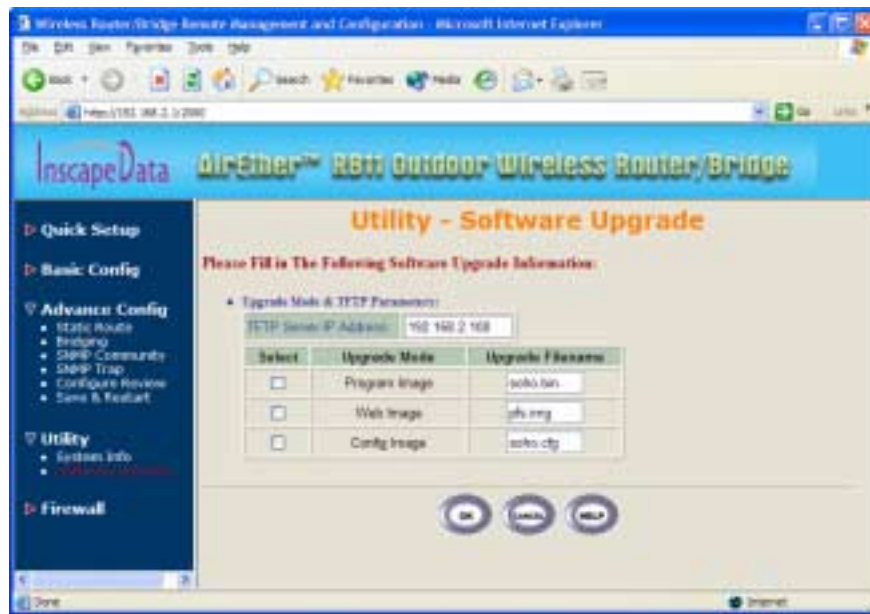


Figure 1.

Note: You must set up a TFTP server on the same network and the server must contain the updated software image.