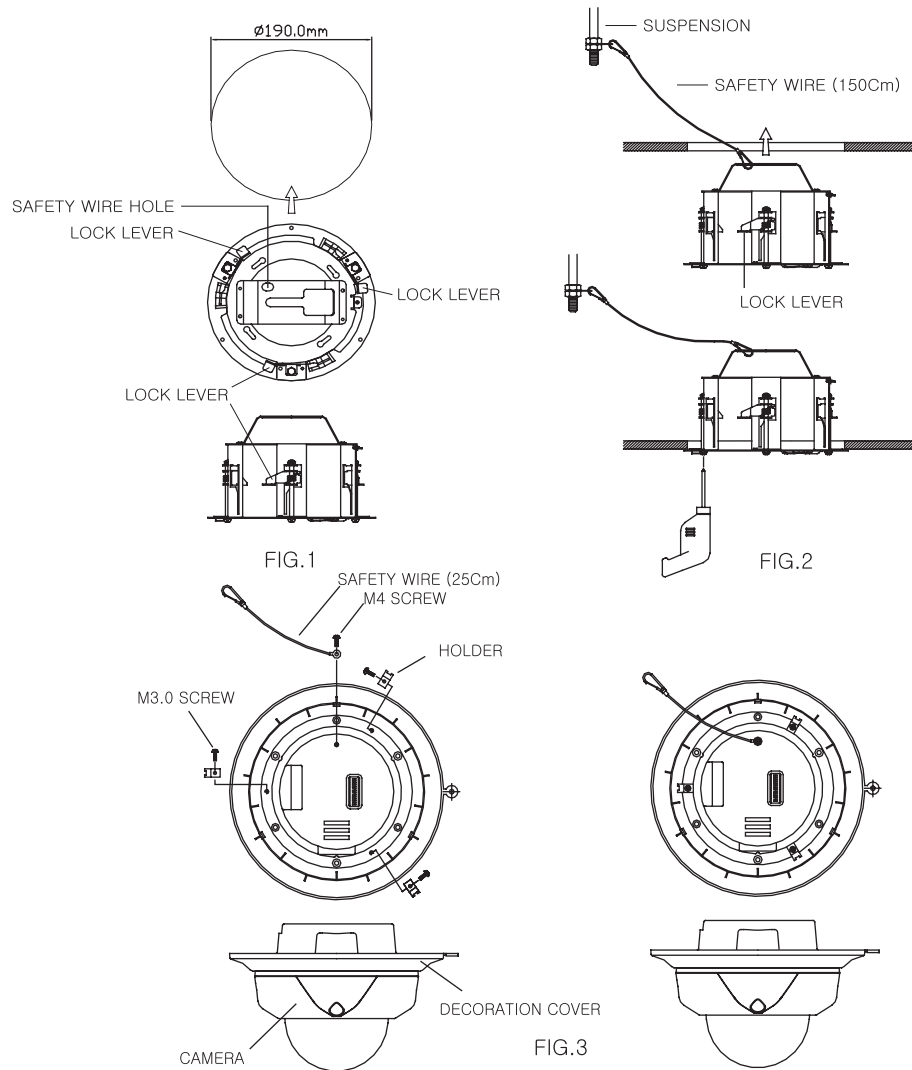


CONTENTS

- | | |
|-------------------------------|-------------------------------------|
| 1. EMBEDDED MOUNT BRACKET 1EA | 4. HOLDER 3EA |
| 2. DECORATION COVER 1EA | 5. SCREW – M3.0x6 5EA , Ø4.0x16 1EA |
| 3. SAFETY WIRE 2EA | 6. MANUAL 1EA |

1. Make a hole, Ø190mm, on the ceiling. (FIG.1)
2. Hook the safety wire over suspension and safety wire hold of embedded mount bracket.
Fold the lock levers and insert the bracket into the hole.
You can fix the lock lever by driving screws. (FIG.2)
3. Fix the decoration cover on the rear of camera by holder screws (M3.0) (FIG.3)



4. Drive the screw (M4.0) to fix safety wire of camera and hook the safety wire over safety wire hold of embedded mount bracket. (FIG.4)
5. Install the cover by inserting cover lock and twisting clockwise. (FIG.5)
6. Fix the decoration cover by screw (Ø4.0x16) (FIG.5)

