



KEY FEATURES

Compact and Durable

Cross drilled corrosion resistant coated galvanized steel reflector and stainless steel bracket mounts maximize rugged mechanical aspects and minimize wind loading to provide users with maintenance free operation

High Performance Radiation Pattern

Superior RF and Ground Plane Design to Ensure Maximum Directivity and Minimizes Leakages

Low Loss High Efficiency Radiation System

Exceptional VSWR ranging from 1.3 to 1.5 to maximize electrical to wireless power transfer

Low Side and Back Lobe Radiation

Easier Frequency Coordination and Interference Mitigation

Low Visibility

Neutral Color and Sleek Design Minimizes Visual Impact to Deployment Area

Work Well in Highly Congested Area

Antenna Directivity Optimizes License Free Radio Spectrum to Provide More Aggregated Bandwidth Per Deployment Area

Center Pin Grounded

Minimize Transient Voltage Protection for Connected Radio System

GENERAL TECH SPECS

Electrical

Max Power Input	15W
Polarization	Linear
Impedance	50 ± 5 Ohms
VSWR	1:1.3 Max

Mechanical

Connector Type	N Female
Temperature Range	-20°C to +60°C
Random Color	Gray Corrosion Resistant Enamel
Random Material	ABS
Reflector Material	Galvanized Steel
Mounting Method	Vertical
Max Pole Size	2 inches

AirEther™ SA Series

2.4GHz and 5GHz Sector Antennas

Inscape Data Corporation, the leading outdoor network appliance company, offers a broad range of high gain antennas, 9dBi to 29dBi, for every major license free air interface technology with broad deployments in all regions. The portfolio of Inscape Data sector antenna system includes all-weather antennas for outdoor long range license free radios and WiFi systems in bands ranging from 2.4GHz up to 6 GHz. The high performance and low loss sector antennas are built ground up with focus on reliability, durability, and performance. Inscape Data sector antenna offers the best return on investment for the license free long range wireless industry.

APPLICATIONS



WIRELESS NETWORK SOLUTIONS

Building to building wireless connectivity or point to multipoint wireless bridges, Inscape Data outdoor antenna system provides high reliability and performance for the most demanding wireless networking applications



WIRELESS INFRASTRUCTURE

Complete outdoor wireless infrastructure antenna solutions from Inscape Data catering to wireless internet service providers, municipalities, SCADA, wireless machine to machine, telemetry, institutions, campuses, and more. Inscape Data is your one-stop source for high performance economical antenna solutions



CARRIER SOLUTIONS

Inscape Data antenna solutions provide the best in class transmission electrical characteristics between 2.4 GHz and 5.8 GHz. The high performance characteristics keep the carrier wide-band high capacity backhaul and wireless transmission networks moving in the most extreme weather conditions



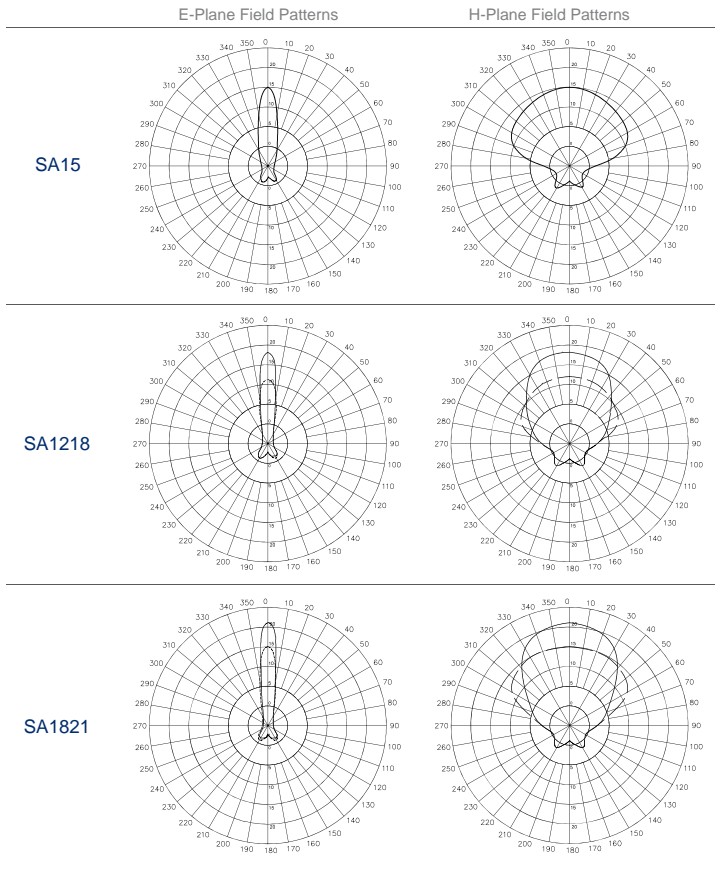
WIRELESS VIDEO SECURITY

For hard to wire video applications, Inscape Data outdoor antenna system economically transmit and receive sensitive security images to secure parking lots, property perimeter, and even the most remote places

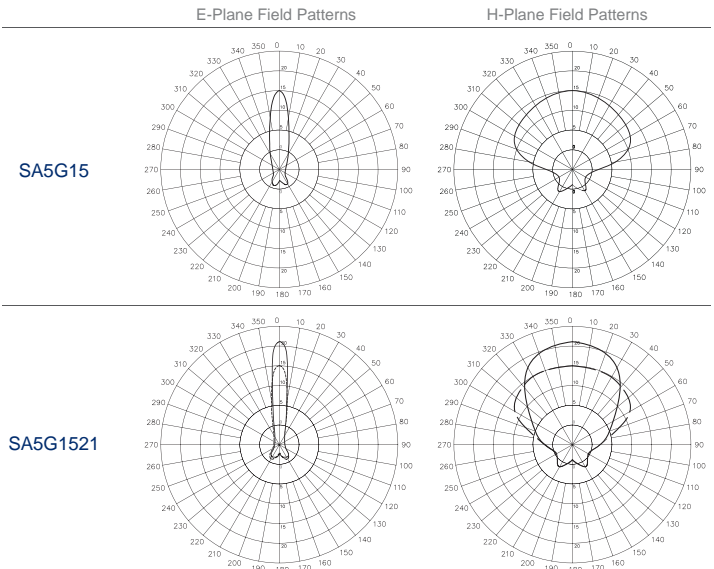
SYSTEM CONFIGURATIONS

Band	2.4GHz			5GHz	
Model Name	SA15	SA1218	SA1821	SA5G15	SA5G1521
Electrical					
Frequency Range	2400~2500MHz	2400~2500MHz	2400~2500MHz	5100~5900MHz	5100~5900MHz
Gain (dBi)	15 dBi	12~18 dBi	15~21 dBi	15 dBi	15~21 dBi
3 dB Horizontal Beamwidth	120°	60°~120°	60°~120°	120°	60°~120°
3 dB Vertical Beamwidth	10°	10°	10°	10°	10°
Front-to-Back Ratio	30dB	25dB	30dB	30dB	30dB
Mechanical					
Dimensions	865 x 130 x 65mm	370 x 130 x 65mm	865 x 130 x 65mm	370 x 130 x 65mm	370 x 130 x 65mm
Weight	3.4kg	3.05kg	4.84kg	2.4kg	3.09kg

2.4GHZ SA PATTERNS



5GHZ SA PATTERNS



ACCESSORIES

AC100
1M Low Loss Antenna Cable
N-Male to N-Male



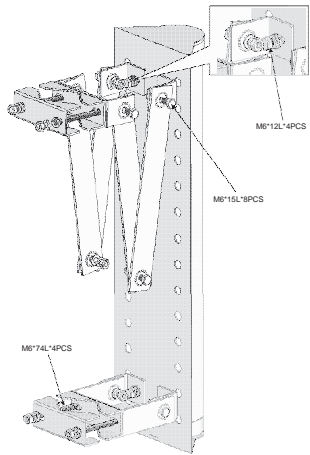
LSS0001
0-6GHz High Performance
RF Lighting Arrestor



PACKAGE CONTENTS

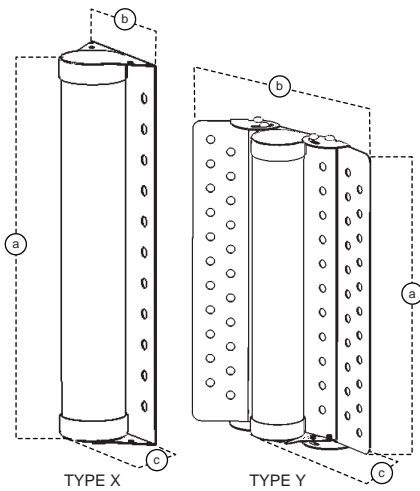
- Sector Antenna
- Wall and Pole Mount Kit
- Antenna Literature

BRACKET INFORMATION



Bracket Type	Swivel Wall & Pole Mount
Max Length	52cm
Min Length	20cm
Weight	470g
Swivel Angel	+/- 90° (H) +/- 40° (V)
Material	Powder Coated Steel

DIMENSIONS



Frequency & Part No.	Dimension axbxc	Antenna Type
2.4GHz - SA15	865x130x65mm	X
2.4GHz - SA1218	370x130x65mm	Y
2.4GHz - SA1821	865x130x65mm	Y
5GHz - SA5G15	370x130x65mm	X
5GHz - SA5G1521	370x130x65mm	Y



THE LEADING
OUTDOOR NETWORK
APPLIANCE COMPANY

Total Turnkey Solutions for Outdoor PoE, Wired/Wireless, and IP Video Applications

Product Information Online: <http://www.inscapedata.com/antenna-sa.htm>

Corporate Headquarters
1620 Oakland Road, Suite D101, San Jose, CA 95131, U.S.A.
PHONE +1.408.392.9800 FAX +1.408.392.9812
EMAIL sales@inscapedata.com