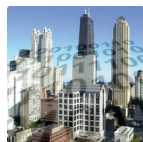


AirEther™ Dual Polarity MIMO Panel Antennas



APPLICATIONS



WIRELESS NETWORK SOLUTIONS

Building to building wireless connectivity or point to multipoint wireless bridges, Inscape Data outdoor antenna system provides high reliability and performance for the most demanding wireless networking applications



CARRIER SOLUTIONS

Inscape Data antenna solutions provide the best in class transmission electrical characteristics between 2.4 GHz and 5.8 GHz. The high performance characteristics keep the carrier wide-band high capacity backhaul and wireless transmission networks moving in the most extreme weather conditions



WIRELESS INFRASTRUCTURE

Complete outdoor wireless infrastructure antenna solutions from Inscape Data catering to wireless internet service providers, municipalities, SCADA, wireless machine to machine, telemetry, institutions, campuses, and more. Inscape Data is your one-stop source for high performance economical antenna solutions



WIRELESS VIDEO SECURITY

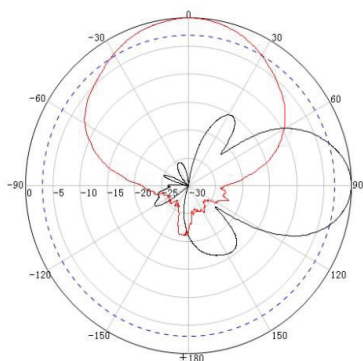
For hard to wire video applications, Inscape Data outdoor antenna system economically transmit and receive sensitive security images to secure parking lots, property perimeter, and even the most remote places

SPECIFICATIONS

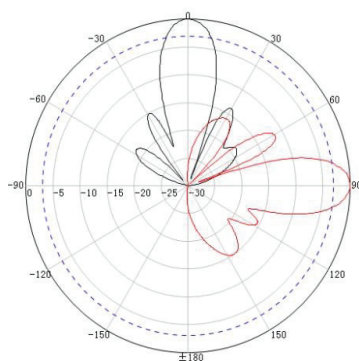
	PA24G12M	PA24G18M	PA5G14M	PA5G18M
Electrical Specifications				
Frequency	2400-2500MHz	2400-2500MHz	5550-5850MHz	5150-5850MHz
Bandwidth	100MHz	100MHz	300MHz	700MHz
VSWR	≤1.5	≤1.5	≤1.8	≤2.0
Gain	12dBi	18dBi	14dBi	18dBi
Horizontal Beam width	65°	18°	35°	16°
Vertical Beam width	30°	9°	33°	9°
Front or Back Ratio	≥25dB	≥25dB	≥23dB	≥23dB
Polarization Type	±90°	±90°	±90°	±90°
Rated power	50w	50w	50w	50w
Input Impedance	50Ω	50Ω	50Ω	50Ω
Lightning Protection	DC Ground	DC Ground	DC Ground	DC Ground
Connector Type	2×N-Female	2×N-Female	2×N-Female	2×N-Female
Mechanical Specifications				
Dimensions	190×190×30mm	395×365×40mm	140×120×40mm	190×190×30mm
Suitable Temperature	-40°C/+60°C	-40°C/+60°C	-40°C/+60°C	-40°C/+60°C
Install Position Adjustment	Vertical 0~30	Vertical 0~30	Vertical 0~30	Vertical 0~30
Radome Material	ABS	ABS	ABS	ABS
Weight of Antenna	355 g	1.83 kg	200 g	474 g
Weight of Mounting Kits	256 g	322g	255 g	256 g

PATTERNS

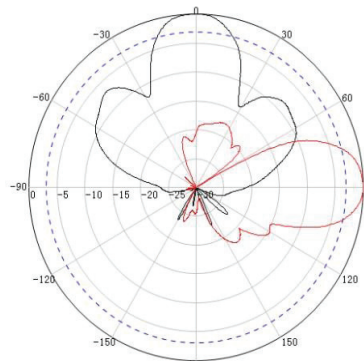
PA24G12M



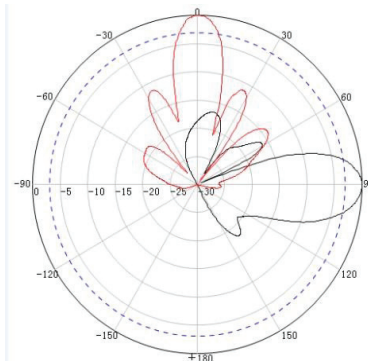
PA24G18M



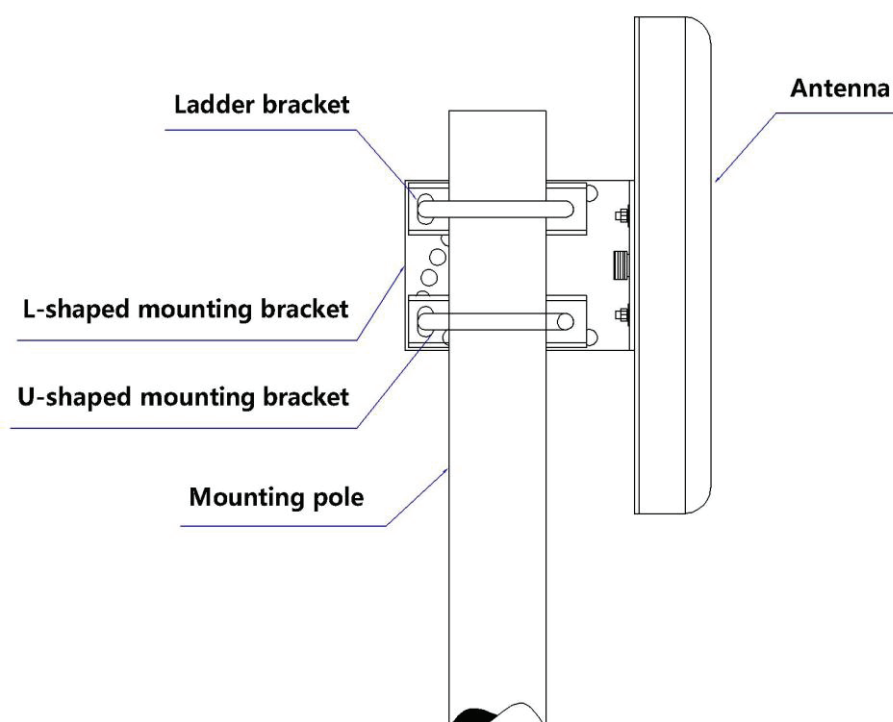
PA5G14M



PA5G18M



MOUNTING



ACCESSORIES

AC100
1M Low Loss Antenna Cable,
N-Male to N-Male



LSS0001
0~6GHz High Performance
RF Lighting Arrestor



PACKAGE CONTENTS

- Dual Polarity MIMO Panel Antenna:
PA24G12M or PA24G18M or PA5G14M or PA5G18M
- Wall and U-bolt Pole Mount Kit
- Antenna Literature



THE LEADING
OUTDOOR NETWORK
APPLIANCE COMPANY

Total Turnkey Solutions for Outdoor PoE, Wired/Wireless, and IP Video Applications

Product Information Online: <http://inscapedata.com/antenna-mimo.htm>

Corporate Headquarters
1620 Oakland Road, Suite D101, San Jose, CA 95131, U.S.A.
PHONE +1.408.392.9800 FAX +1.408.392.9812
EMAIL sales@inscapedata.com

© Copyright 2011, Inscape Data Corporation, All Rights Reserved. LinkPower, AirEther, AirGoogle and Inscape Data are trademarks of Inscape Data Corporation

Disclaimer: While every effort is made to ensure the information given is accurate, Inscape Data Corporation does not accept liability for any errors or mistakes which may arise. All specifications are subject to change without notice.