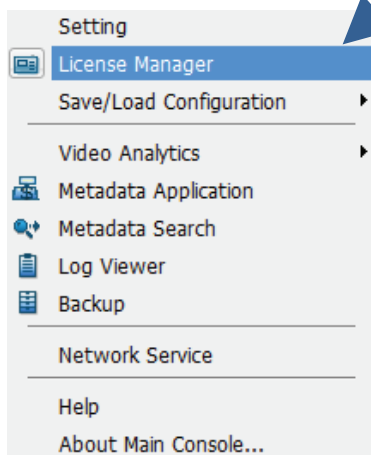
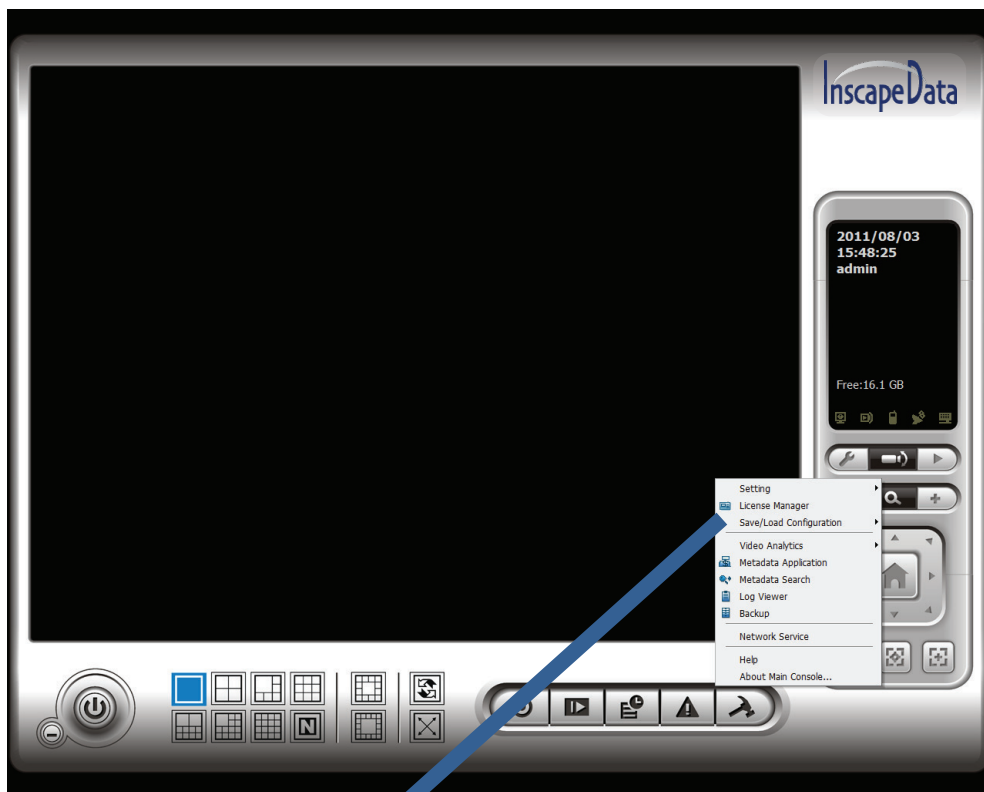


Transfer (De-activation)

When you are shifting a system or re-installing a system, you need to make a transfer. Transfer means you are invalidating the use on your current machine and registering new machine information with the INSCAPE DATA license server. If you are re-installing your OS, or replacing your current network adaptor, you need to make a transfer before you can continue to run main console. Making a transfer can be done online if you have internet access or offline if you do not have it.

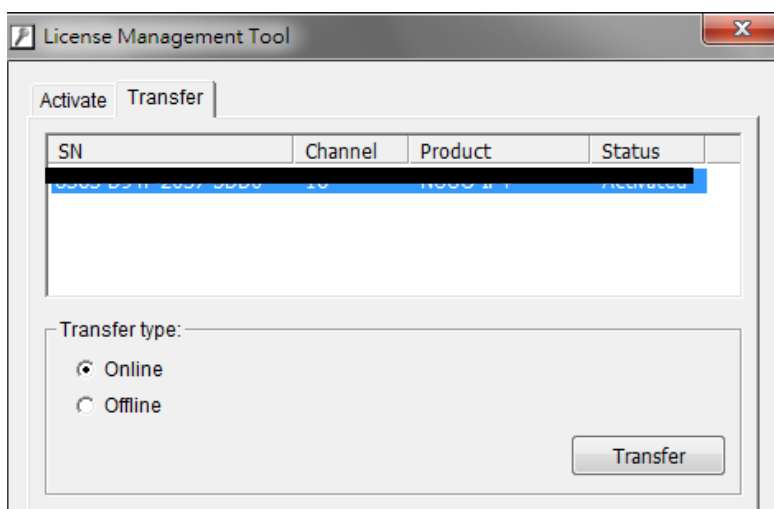
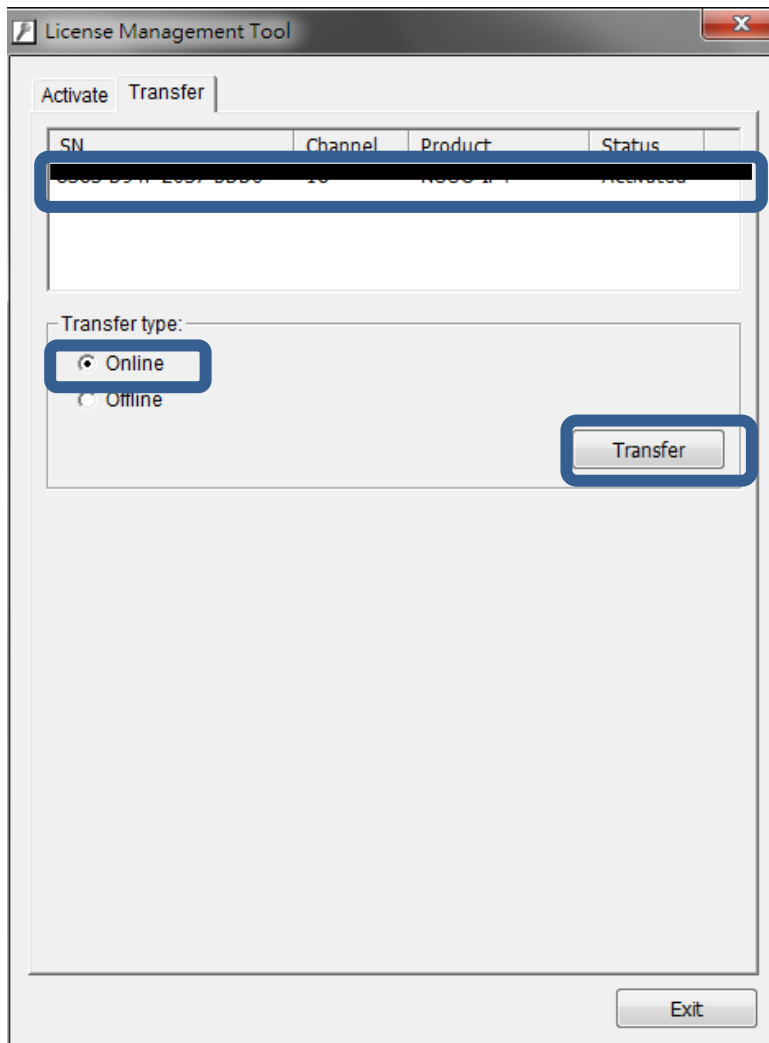
Online Transfer

Input the "SN (Serial number)", and then click on "Activate" button.



Please go to Transfer tab and select the SN (serial number) you want to transfer and click on Transfer.

Note: Please write down the serial number before transferring.



After transfer, SN (serial numbers) will become de-activated.

