

Activation

Activation included two types:

I. Online

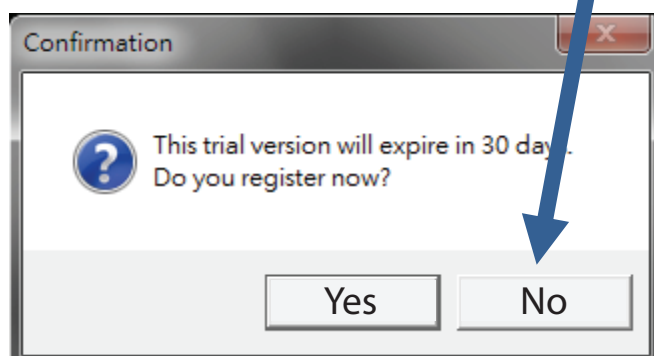
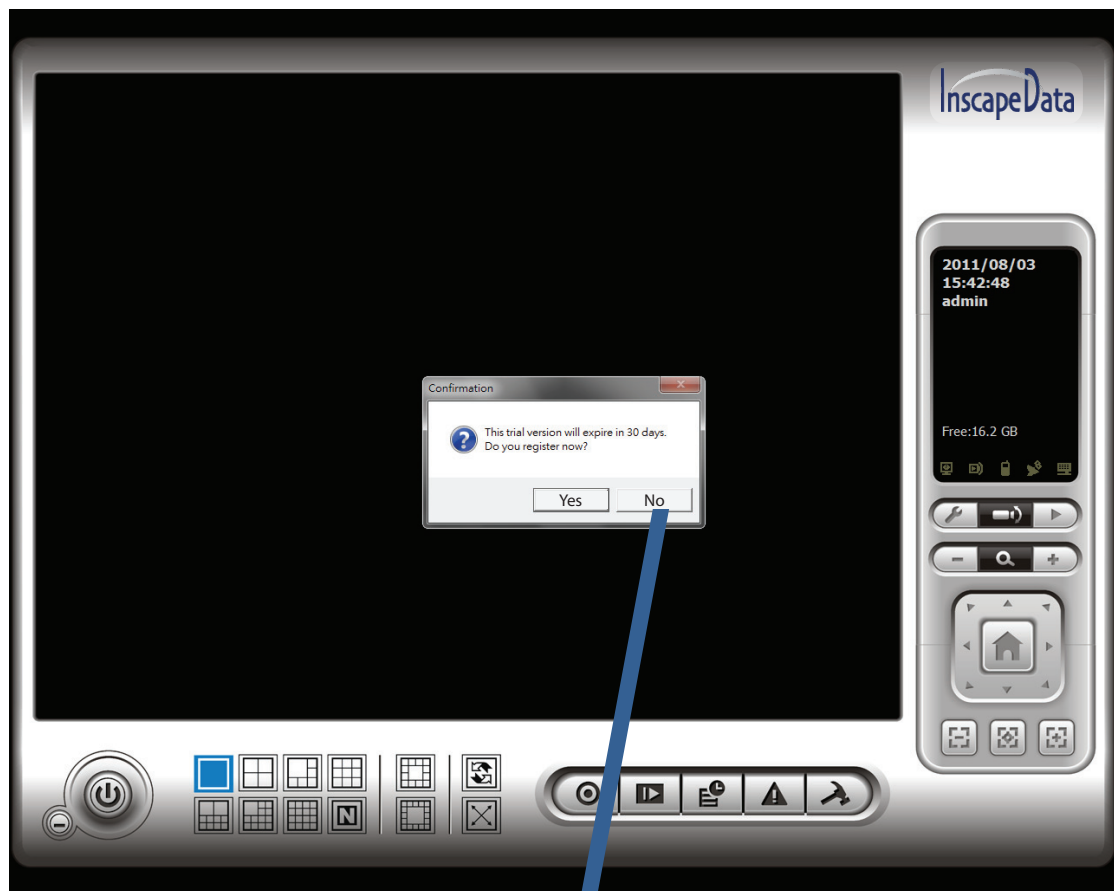
II. Offline.

Online means that user activate NVM2000 on computer connected to the internet.

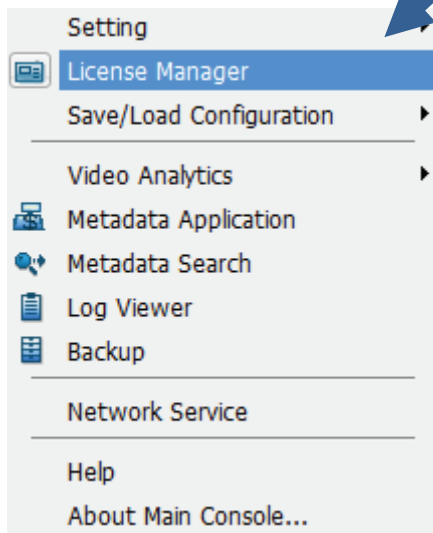
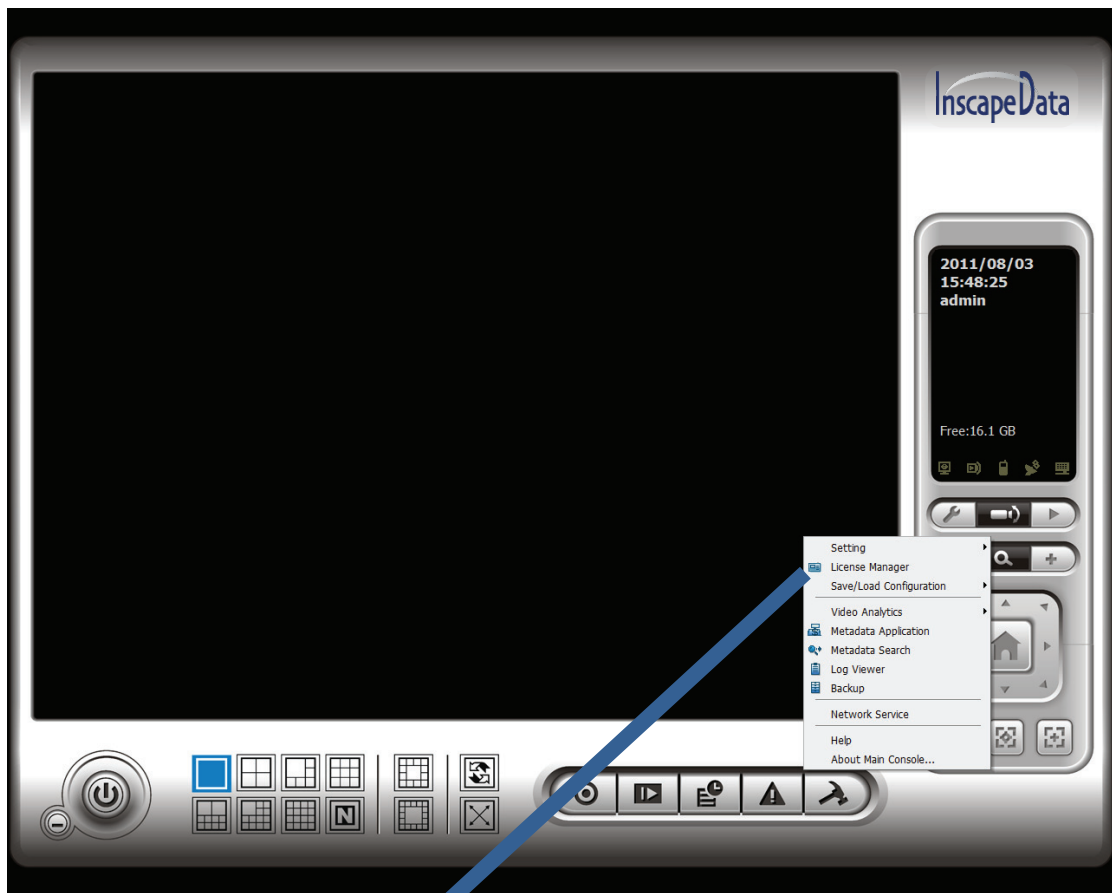
Offline means that user activate NVM2000 on computer without any internet access.

Activation online

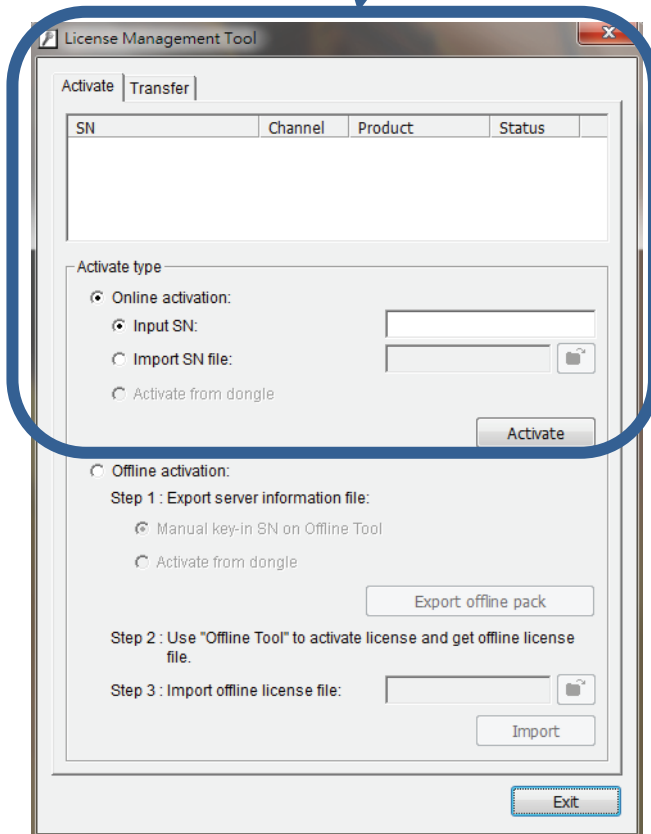
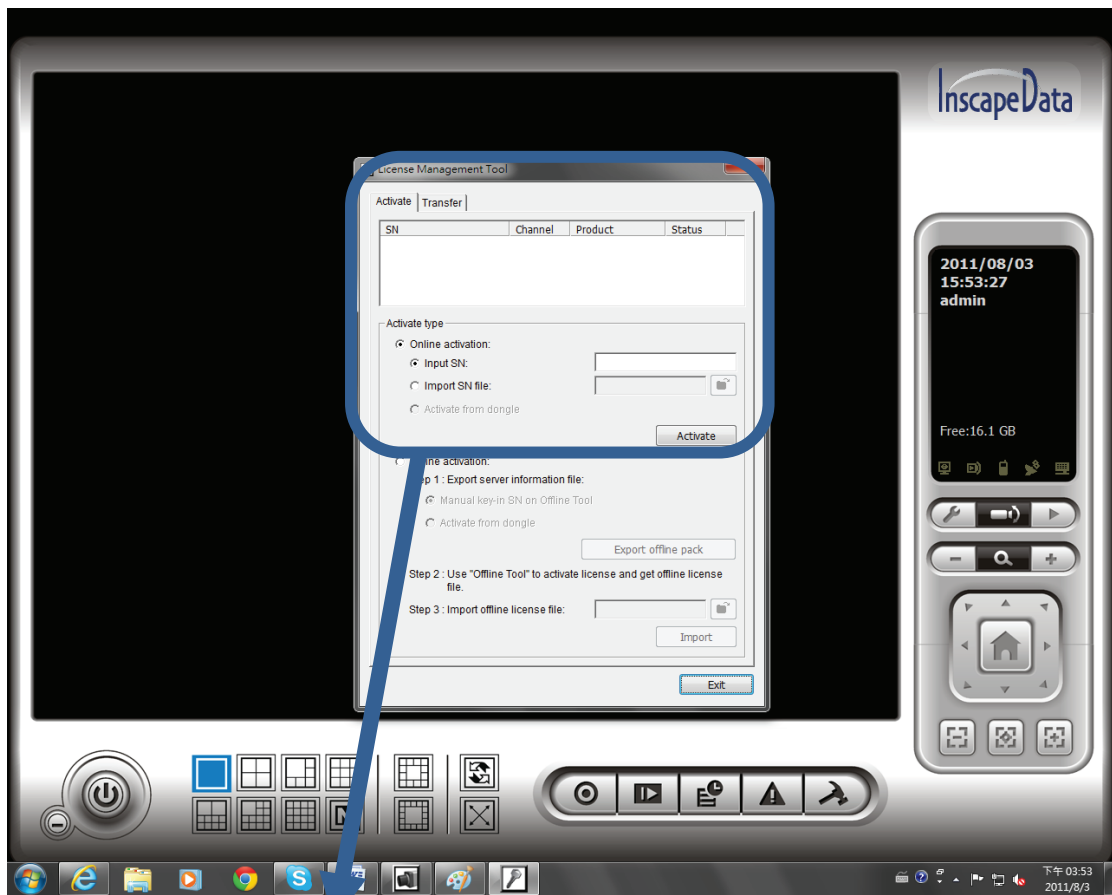
As you open “INSCAPE DATA Main Console”, you will see a confirmation column shows information. Please click N (No).



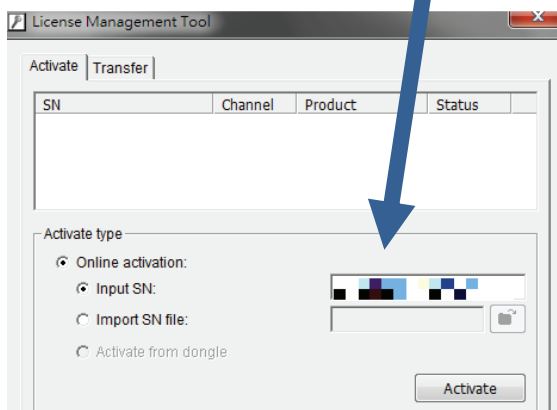
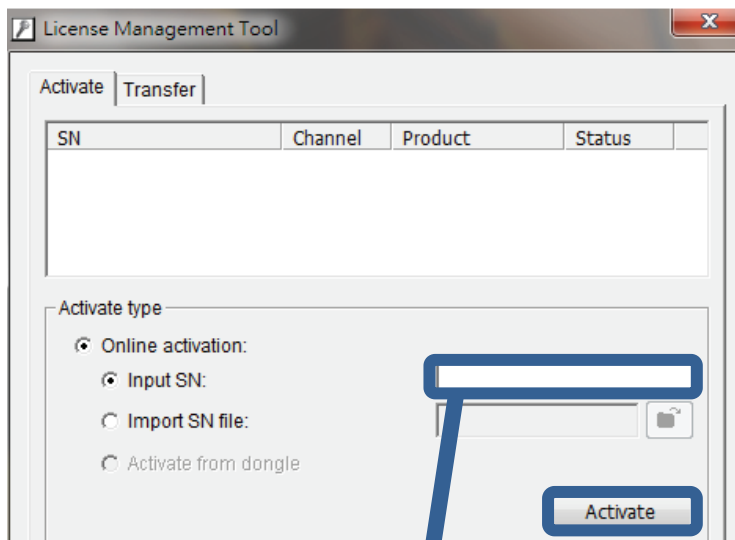
Input the "SN (Serial number)", and then click on "Activate" button.



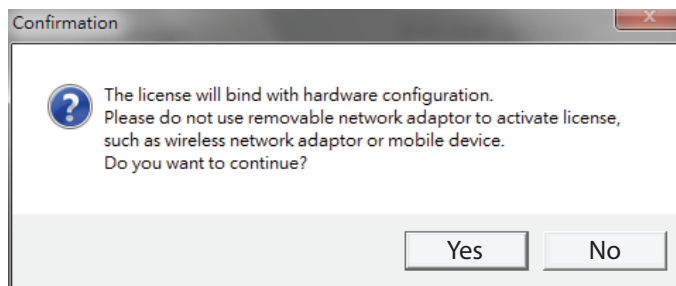
Choose "online activation" as Activate type.



Input the "SN (Serial number)", and then click on "Activate" button.



Press Y (Yes).



In the end, you will see this confirmation column.

