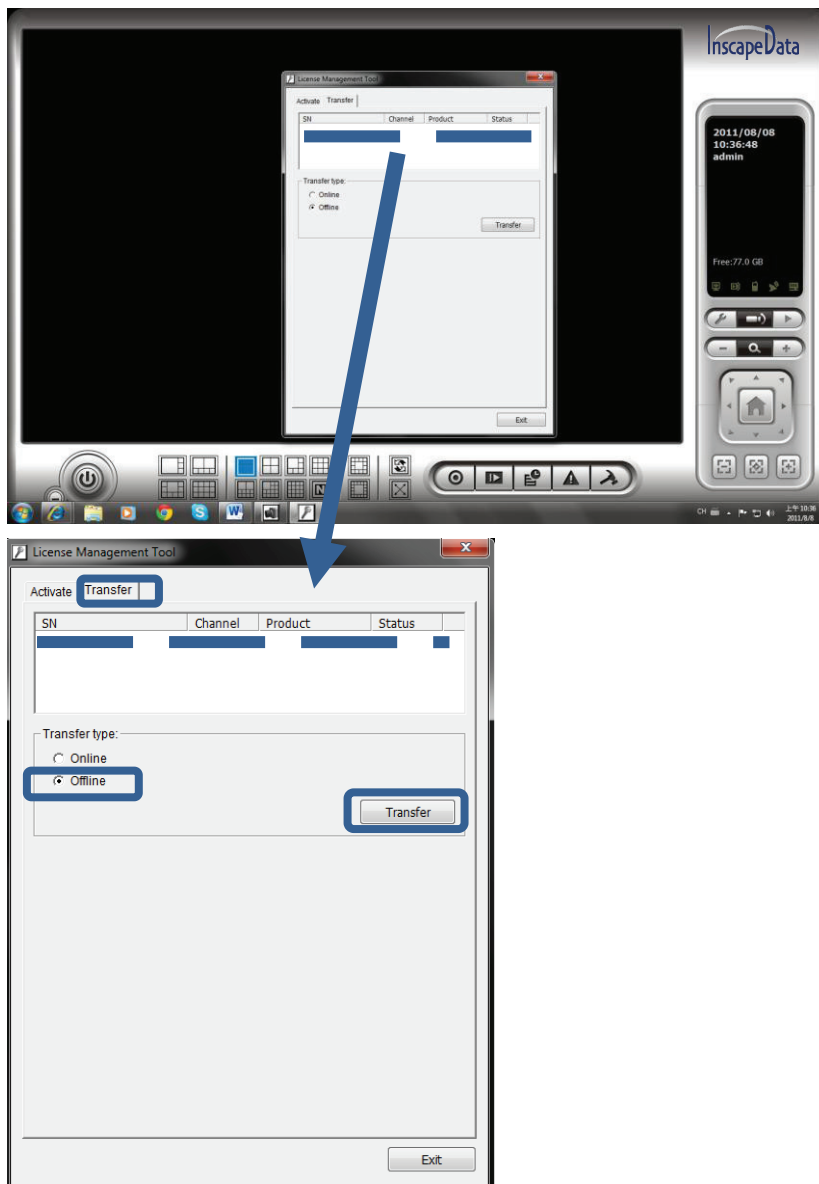


Transfer (De-activation)

When you are shifting a system or re-installing a system, you need to make a transfer. Transfer means you are invalidating the use on your current machine and registering new machine information with the INSCAPE DATA license server. If you are re-installing your OS, or replacing your current network adaptor, you need to make a transfer before you can continue to run main console. Making a transfer can be done online if you have internet access or offline if you do not have it.

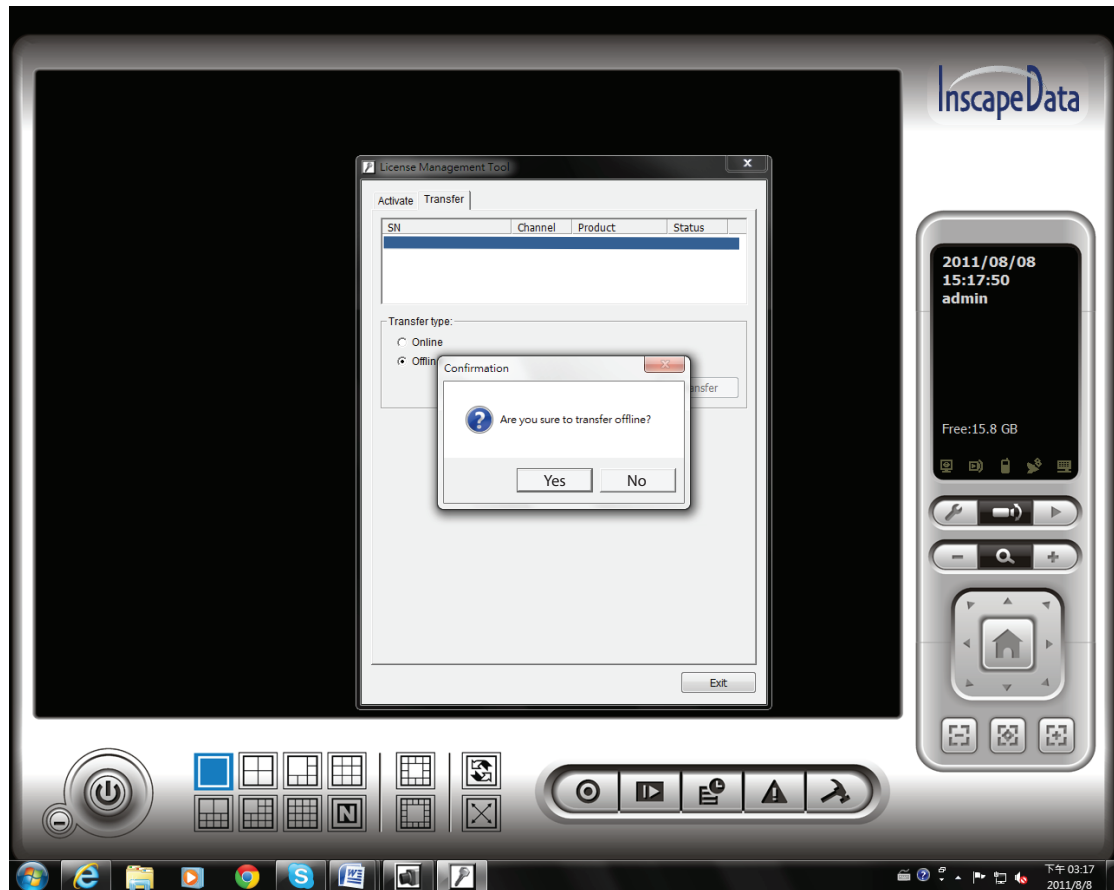
Offline Transfer

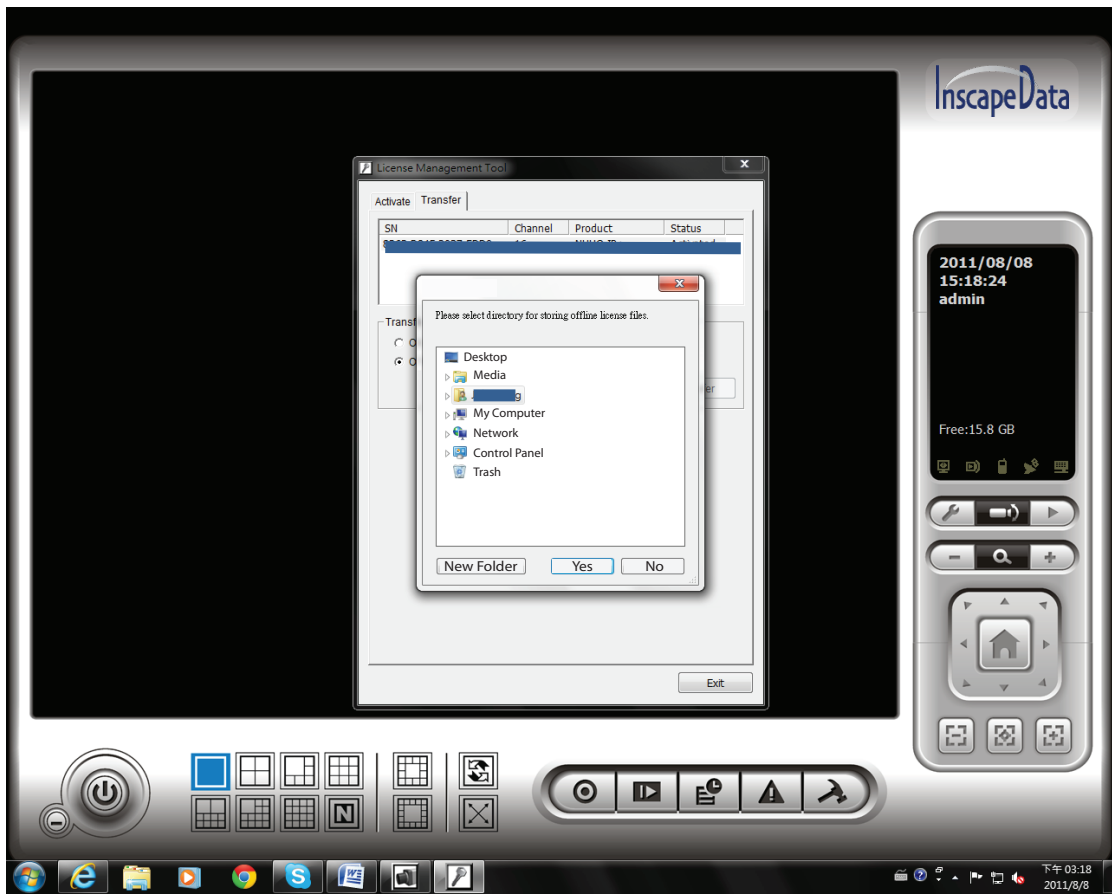
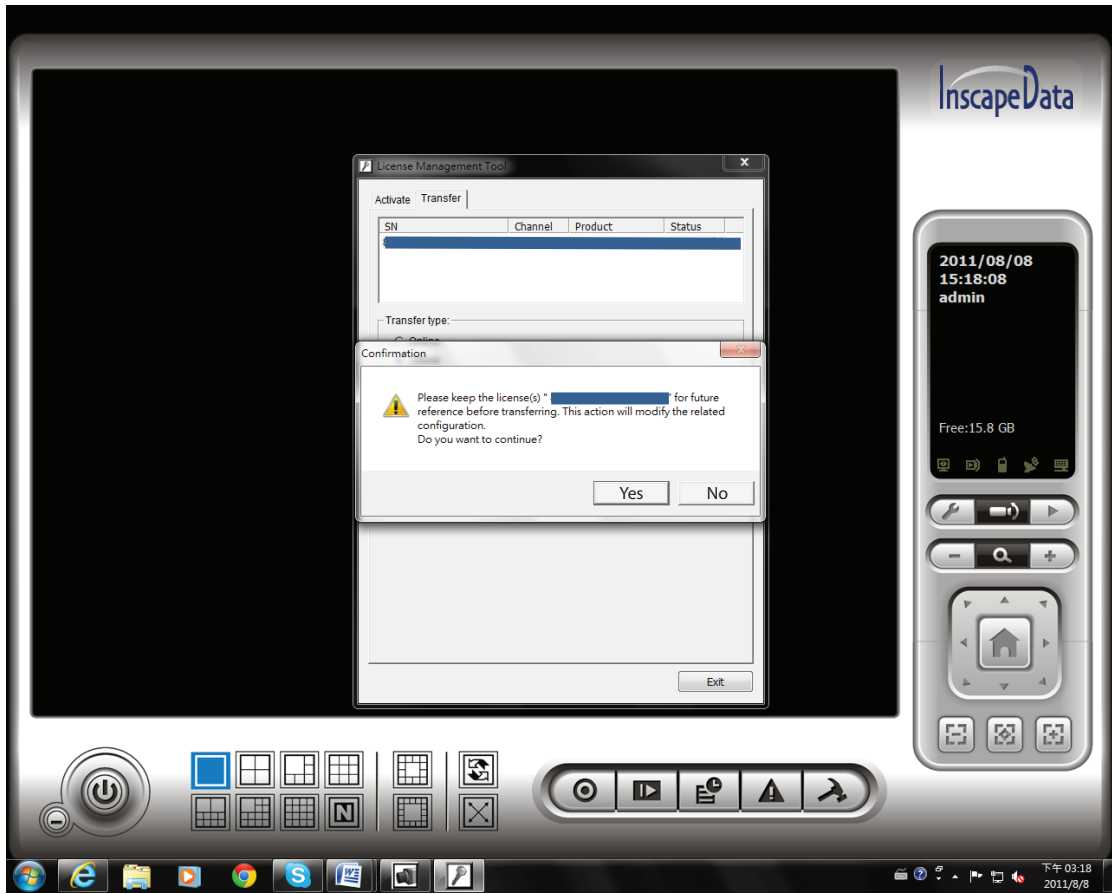
Open "License Management Tool" and go to Transfer tab and check "Offline" as transfer type. Select the serial number you want to transfer and click on Transfer.

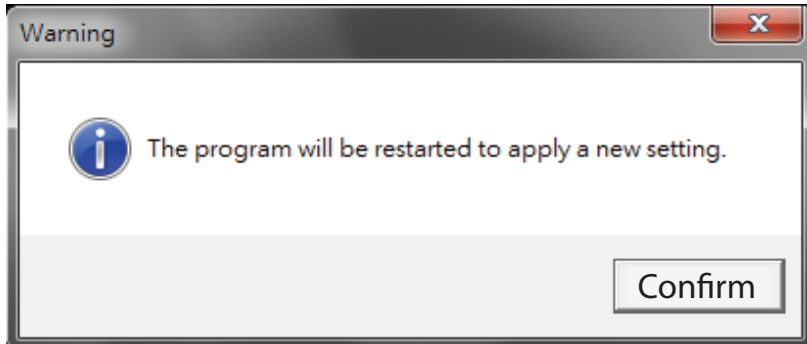
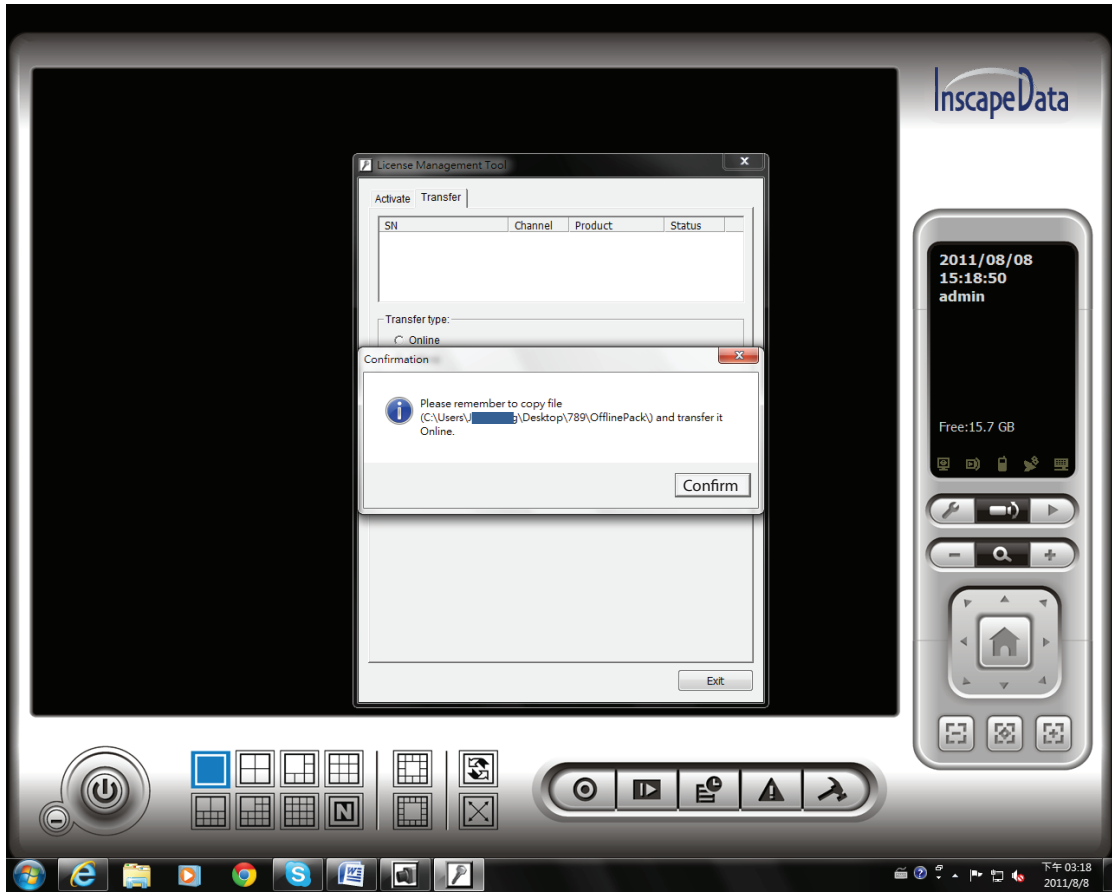


When clicking on transfer, it will prompt a few messages and a window to ask you where you want to save the offline transfer tools, please make a new folder such as offline transfer to save these files then click on OK.

Note: Remember to take this folder to another PC that is connected to Internet.





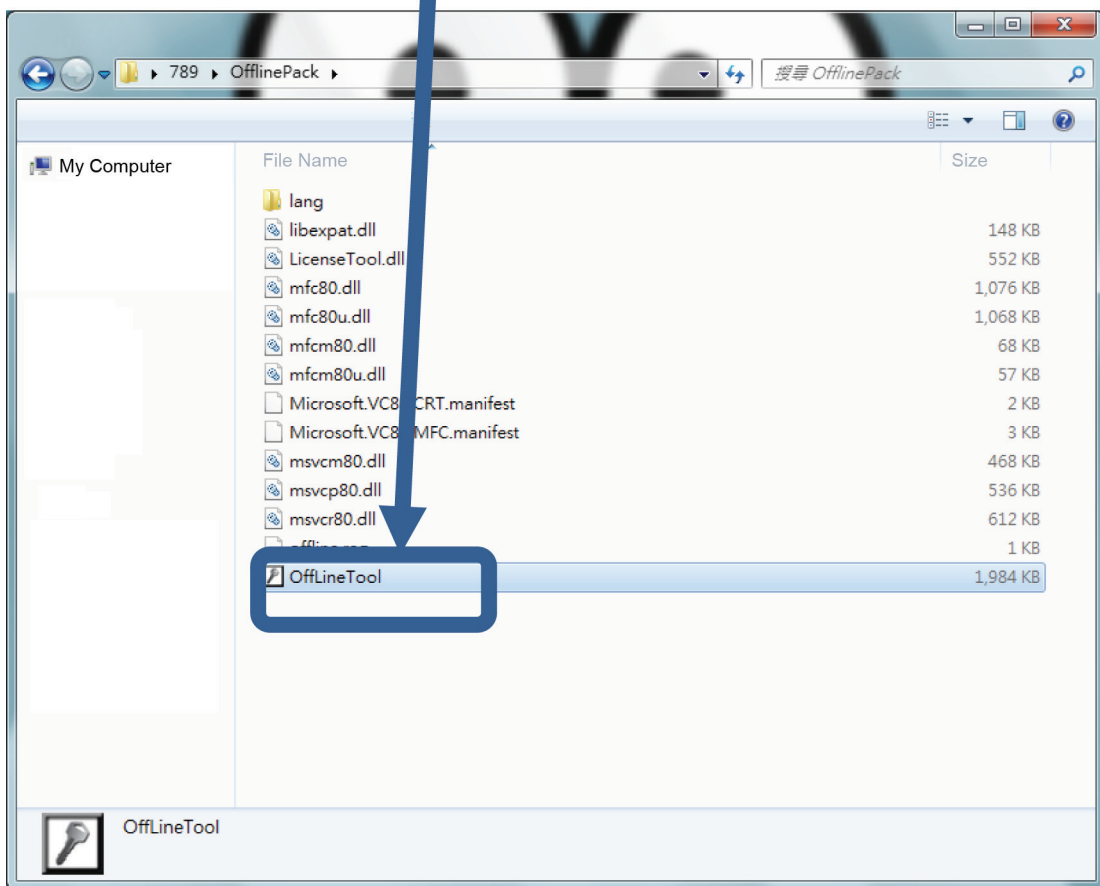
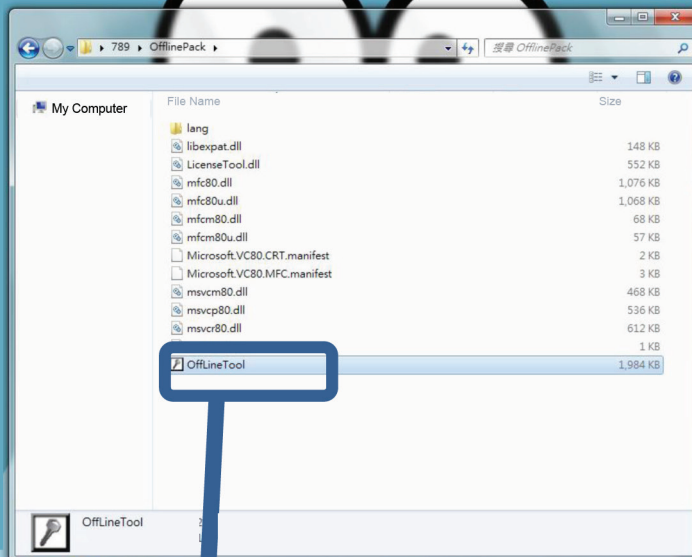


In another PC which is connected to Internet, in folder please find a file named "OffLineTool" and execute it, click "Transfer" to send request to NUUO license server.

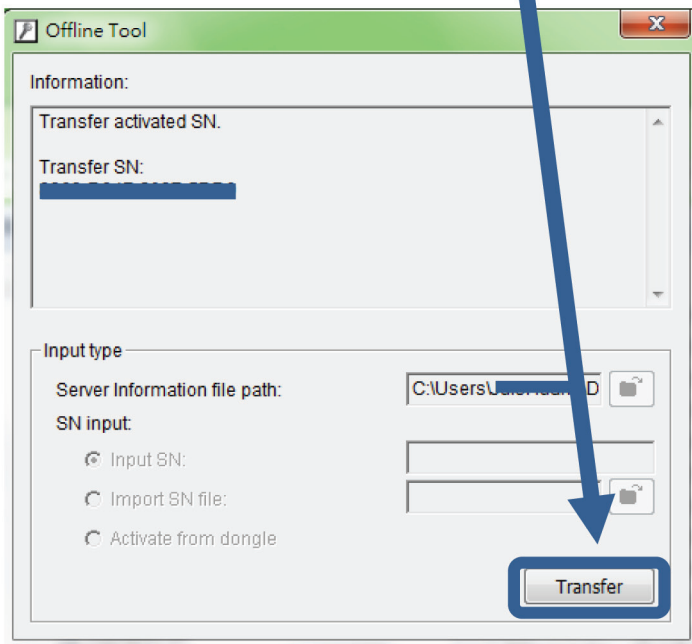
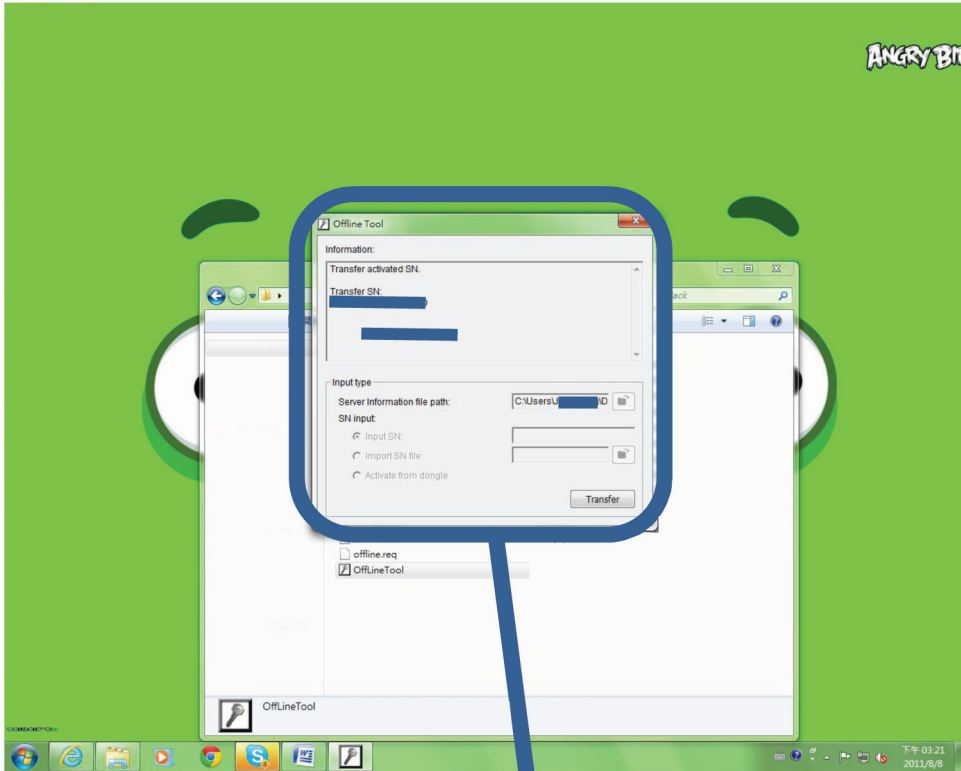
Note: Make sure you execute "OffLineTool" properly or it will not de-activate correctly.



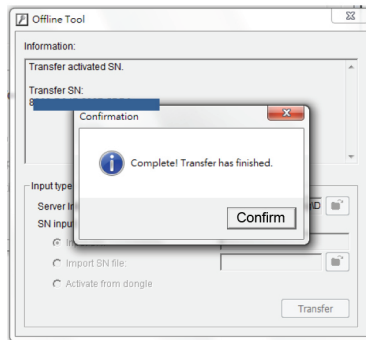
ANGRY BIR



Check if transfer process is completed.



You will see this confirmation column that shows information “Complete! Transfer has finished.”



In the end, you will see this Offline Tool column that shows information “Complete! Transfer has finished.”

